



462139751

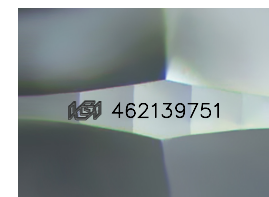
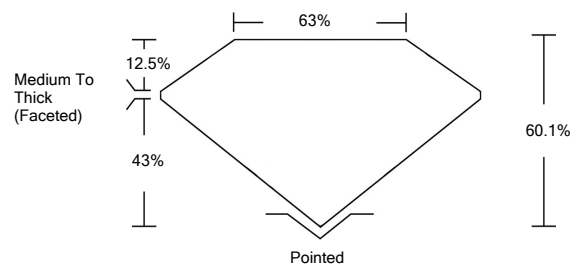
DIAMOND REPORT **ELECTRONIC COPY**

February 8, 2021
 IGI Report Number 462139751
 Description NATURAL DIAMOND
 Shape and Cutting Style PEAR BRILLIANT
 Measurements 11.12 x 7.10 x 4.27 mm

GRADING RESULTS
 Carat Weight 2.01 CARATS
 Color Grade I
 Clarity Grade VS 2

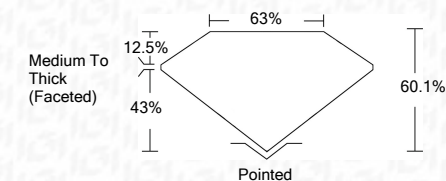
ADDITIONAL GRADING INFORMATION
 Polish - Symmetry VERY GOOD
 Proportions VERY GOOD
 Fluorescence STRONG
 Inscription(s) IGI 462139751

PROPORTIONS

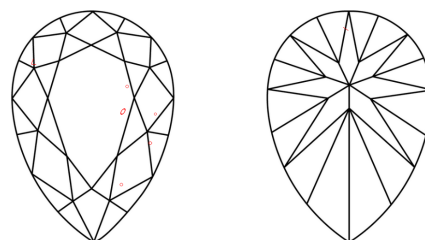


February 8, 2021
 IGI Report Number 462139751
 Description NATURAL DIAMOND
 Shape and Cutting Style PEAR BRILLIANT
 Measurements 11.12 x 7.10 x 4.27 mm

GRADING RESULTS
 Carat Weight 2.01 CARATS
 Color Grade I
 Clarity Grade VS 2



CLARITY CHARACTERISTICS



KEY TO SYMBOLS

Red symbols indicate internal characteristics.
 Green symbols indicate external characteristics.

COLOR

D - F	G - J	K - M	N - R	S - Z	FANCY
Colorless	Near Colorless	Slightly Tinted	Very Light Color	Light Color	

CLARITY

IF	VS ¹⁻²	VS ¹⁻²	SI ¹⁻²	I ¹⁻²
Internally Flawless	Very Very Slightly Included	Very Slightly Included	Slightly Included	Included

ADDITIONAL GRADING INFORMATION

Polish - Symmetry VERY GOOD
 Proportions VERY GOOD
 Fluorescence STRONG
 Inscription(s) IGI 462139751



IGI

February 8, 2021
 IGI Report No 462139751
 NATURAL DIAMOND
 PEAR BRILLIANT
 11.12 x 7.10 x 4.27 mm
 Carat Weight 2.01 CARATS
 Color Grade VS2
 Clarity Grade VS2
 Depth 60.1%
 Table 63%
 Girdle Medium To Thick (Faceted)
 Culet Pointed
 Pol - Sym VERY GOOD
 Proportions VERY GOOD
 Fluorescence STRONG
 Inscription(s) IGI 462139751

