



516264517

**DIAMOND REPORT** **ELECTRONIC COPY**

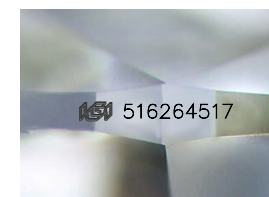
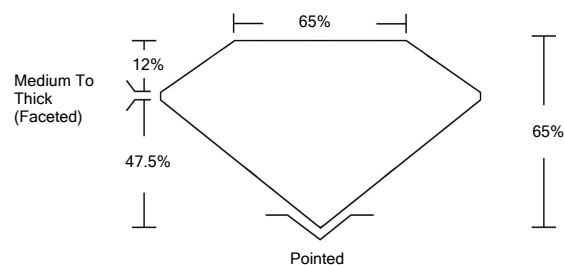
May 20, 2022  
 IGI Report Number 516264517  
 Description NATURAL DIAMOND  
 Shape and Cutting Style PEAR BRILLIANT  
 Measurements 8.45 x 5.51 x 3.58 mm

**GRADING RESULTS**  
 Carat Weight 1.01 CARAT  
 Color Grade I  
 Clarity Grade SI 2

**ADDITIONAL GRADING INFORMATION**  
 Polish - Symmetry EXCELLENT  
 Proportions VERY GOOD  
 Fluorescence NONE  
 Inscription(s) IGI 516264517



**PROPORTIONS**

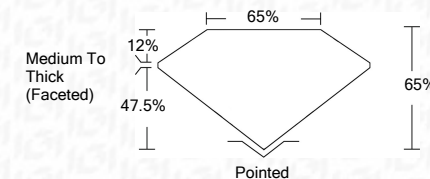


Sample Image Used

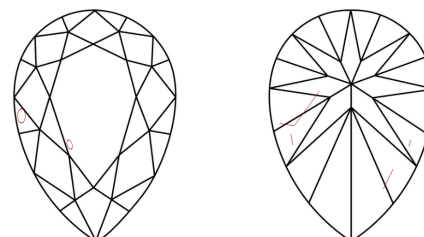


May 20, 2022  
 IGI Report Number 516264517  
 Description NATURAL DIAMOND  
 Shape and Cutting Style PEAR BRILLIANT  
 Measurements 8.45 x 5.51 x 3.58 mm

**GRADING RESULTS**  
 Carat Weight 1.01 CARAT  
 Color Grade I  
 Clarity Grade SI 2



**CLARITY CHARACTERISTICS**



**KEY TO SYMBOLS**  
 Red symbols indicate internal characteristics.  
 Green symbols indicate external characteristics.

**COLOR**

D - F	G - J	K - M	N - R	S - Z	FANCY
Colorless	Near Colorless	Slightly Tinted	Very Light Color	Light Color	

**CLARITY**

IF	VS <sup>1-2</sup>	VS <sup>1-2</sup>	SI <sup>1-2</sup>	I <sup>1-3</sup>
Internally Flawless	Very Very Slightly Included	Very Slightly Included	Slightly Included	Included

**ADDITIONAL GRADING INFORMATION**

Polish - Symmetry EXCELLENT  
 Proportions VERY GOOD  
 Fluorescence NONE  
 Inscription(s) IGI 516264517



**IGI**

May 20, 2022  
 IGI Report No 516264517  
 NATURAL DIAMOND  
 PEAR BRILLIANT  
 8.45 x 5.51 x 3.58 mm  
 Carat Weight 1.01 CARAT  
 Color Grade SI 2  
 Depth 65%  
 Table Medium To Thick (Faceted)  
 Girdle Pointed  
 Culet EXCELLENT  
 Pol - Sym VERY GOOD  
 Proportions NONE  
 Fluorescence IGI 516264517  
 Inscription(s)

