



516264490

DIAMOND REPORT ELECTRONIC COPY

May 27, 2022
IGI Report Number 516264490
Description NATURAL DIAMOND
Shape and Cutting Style ROUND BRILLIANT
Measurements 7.56 - 7.65 x 4.74 mm

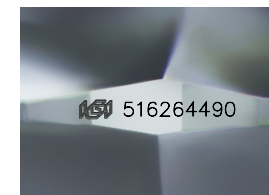
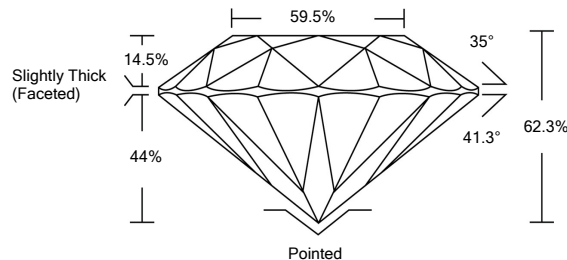
GRADING RESULTS

Carat Weight 1.70 CARAT
Color Grade I
Clarity Grade SI 1
Cut Grade EXCELLENT

ADDITIONAL GRADING INFORMATION

Polish EXCELLENT
Symmetry EXCELLENT
Fluorescence NONE
Inscription(s) IGI 516264490
Comments: IDEAL CUT ROUND BRILLIANT

PROPORTIONS



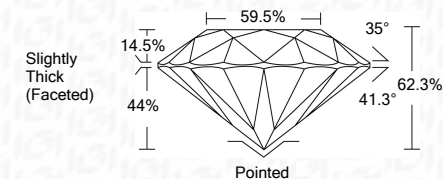
Sample Image Used



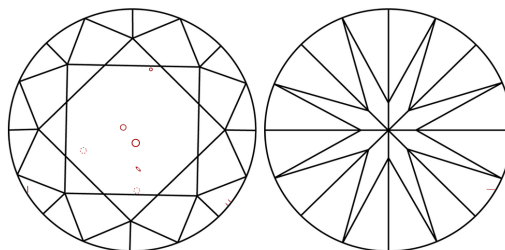
May 27, 2022
IGI Report Number 516264490
Description NATURAL DIAMOND
Shape and Cutting Style ROUND BRILLIANT
Measurements 7.56 - 7.65 x 4.74 mm

GRADING RESULTS

Carat Weight 1.70 CARAT
Color Grade I
Clarity Grade SI 1
Cut Grade EXCELLENT



CLARITY CHARACTERISTICS



KEY TO SYMBOLS

Red symbols indicate internal characteristics.
Green symbols indicate external characteristics.

COLOR

Table with columns D-F, G-J, K-M, N-R, S-Z, FANCY and rows Colorless, Near Colorless, Slightly Tinted, Very Light Color, Light Color.

CLARITY

Table with columns IF, VS 1-2, VS 1-2, SI 1-2, I 1-3 and rows Internally Flawless, Very Very Slightly Included, Very Slightly Included, Slightly Included, Included.

ADDITIONAL GRADING INFORMATION

Polish EXCELLENT
Symmetry EXCELLENT
Fluorescence NONE
Inscription(s) IGI 516264490
Comments: IDEAL CUT ROUND BRILLIANT



IGI

May 27, 2022
IGI Report No 516264490
NATURAL DIAMOND
ROUND BRILLIANT
7.56 - 7.65 x 4.74 mm
Carat Weight 1.70 CARAT
Color Grade I
Clarity Grade SI 1
Cut Grade EXCELLENT
Depth 62.3%
Table 59.5%
Girdle Slightly Thick (Faceted)
Culet Pointed
Polish EXCELLENT
Symmetry EXCELLENT
Fluorescence NONE
Inscription(s) IGI 516264490
Comments: IDEAL CUT ROUND BRILLIANT

