



529250490

DIAMOND REPORT **ELECTRONIC COPY**

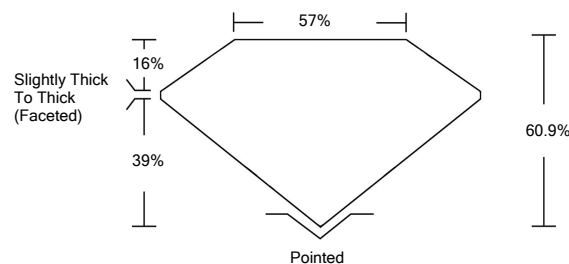
June 20, 2022
 IGI Report Number 529250490
 Description NATURAL DIAMOND
 Shape and Cutting Style PEAR BRILLIANT
 Measurements 13.41 x 8.38 x 5.10 mm

GRADING RESULTS
 Carat Weight 3.54 CARATS
 Color Grade L
 Clarity Grade SI 1

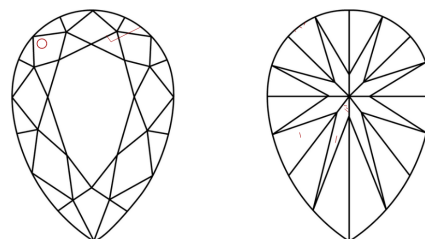
ADDITIONAL GRADING INFORMATION
 Polish - Symmetry EXCELLENT
 Proportions VERY GOOD
 Fluorescence NONE
 Inscription(s) IGI 529250490



PROPORTIONS

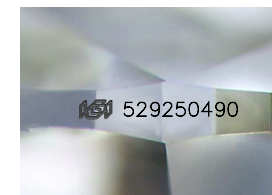


CLARITY CHARACTERISTICS



KEY TO SYMBOLS

Red symbols indicate internal characteristics.
 Green symbols indicate external characteristics.



Sample Image Used

COLOR

D - F	G - J	K - M	N - R	S - Z	FANCY
Colorless	Near Colorless	Slightly Tinted	Very Light Color	Light Color	

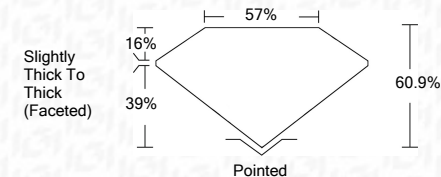
CLARITY

IF	VS ¹⁻²	VS ¹⁻²	SI ¹⁻²	I ¹⁻³
Internally Flawless	Very Very Slightly Included	Very Slightly Included	Slightly Included	Included



June 20, 2022
 IGI Report Number 529250490
 Description NATURAL DIAMOND
 Shape and Cutting Style PEAR BRILLIANT
 Measurements 13.41 x 8.38 x 5.10 mm

GRADING RESULTS
 Carat Weight 3.54 CARATS
 Color Grade L
 Clarity Grade SI 1



ADDITIONAL GRADING INFORMATION
 Polish - Symmetry EXCELLENT
 Proportions VERY GOOD
 Fluorescence NONE
 Inscription(s) IGI 529250490



IGI

June 20, 2022
 IGI Report No 529250490
 NATURAL DIAMOND
 PEAR BRILLIANT
 13.41 x 8.38 x 5.10 mm
 Carat Weight 3.54 CARATS
 Color Grade L
 Clarity Grade SI 1
 Depth 60.9%
 Table 57%
 Girdle Slightly Thick To Thick (Faceted)
 Culet Pointed
 Pol - Sym EXCELLENT
 Proportions VERY GOOD
 Fluorescence NONE
 Inscription(s) IGI 529250490