



529250452

**DIAMOND REPORT**      **ELECTRONIC COPY**

August 5, 2022  
 IGI Report Number      529250452  
 Description      NATURAL DIAMOND  
 Shape and Cutting Style      ROUND BRILLIANT  
 Measurements      7.30 - 7.36 x 4.54 mm

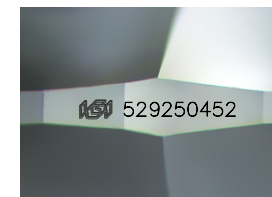
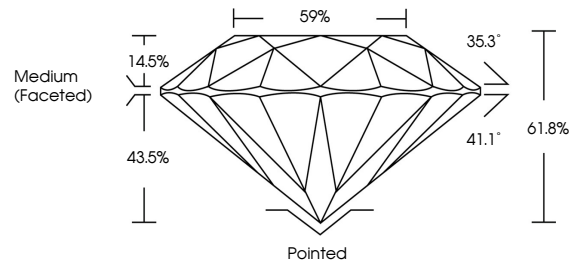
**GRADING RESULTS**

Carat Weight      1.51 CARAT  
 Color Grade      G  
 Clarity Grade      VS 2  
 Cut Grade      EXCELLENT

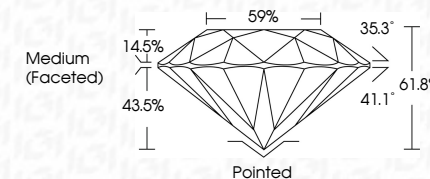
**ADDITIONAL GRADING INFORMATION**

Polish      EXCELLENT  
 Symmetry      EXCELLENT  
 Fluorescence      NONE  
 Inscription(s)      IGI 529250452  
 Comments: IDEAL CUT ROUND BRILLIANT

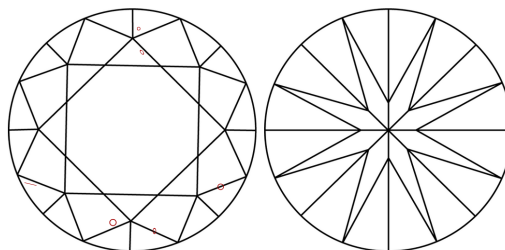
**PROPORTIONS**



Sample Image Used



**CLARITY CHARACTERISTICS**



**KEY TO SYMBOLS**

Red symbols indicate internal characteristics.  
 Green symbols indicate external characteristics.

**COLOR**

D - F	G - J	K - M	N - R	S - Z	FANCY
Colorless	Near Colorless	Slightly Tinted	Very Light Color	Light Color	

**CLARITY**

IF	VS <sup>1-2</sup>	VS <sup>1-2</sup>	SI <sup>1-2</sup>	I <sup>1-3</sup>
Internally Flawless	Very Very Slightly Included	Very Slightly Included	Slightly Included	Included

**GRADING RESULTS**

Carat Weight      1.51 CARAT  
 Color Grade      G  
 Clarity Grade      VS 2  
 Cut Grade      EXCELLENT

**ADDITIONAL GRADING INFORMATION**

Polish      EXCELLENT  
 Symmetry      EXCELLENT  
 Fluorescence      NONE  
 Inscription(s)      IGI 529250452  
 Comments: IDEAL CUT ROUND BRILLIANT



**IGI**



August 5, 2022  
 IGI Report No 529250452  
 NATURAL DIAMOND  
 ROUND BRILLIANT  
 7.30 - 7.36 x 4.54 mm  
 Carat Weight      1.51 CARAT  
 Color Grade      G  
 Clarity Grade      VS 2  
 Cut Grade      EXCELLENT  
 Depth      61.8%  
 Table      59%  
 Grade      Medium (Faceted)  
 Cut      Pointed  
 Polish      EXCELLENT  
 Symmetry      EXCELLENT  
 Fluorescence      NONE  
 Inscription(s)      IGI 529250452  
 Comments: IDEAL CUT ROUND BRILLIANT