



516264526

DIAMOND REPORT

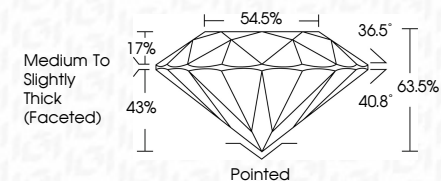
ELECTRONIC COPY



June 28, 2022
IGI Report Number 516264526
Description NATURAL DIAMOND
Shape and Cutting Style ROUND BRILLIANT
Measurements 6.53 - 6.58 x 4.16 mm

GRADING RESULTS

Carat Weight 1.10 CARAT
Color Grade K
Clarity Grade VS 1
Cut Grade EXCELLENT



June 28, 2022
IGI Report Number 516264526
Description NATURAL DIAMOND
Shape and Cutting Style ROUND BRILLIANT
Measurements 6.53 - 6.58 x 4.16 mm

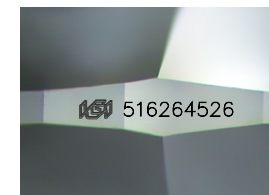
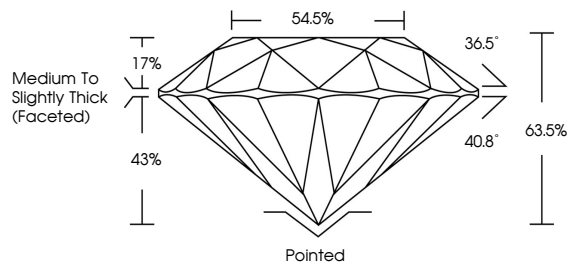
GRADING RESULTS

Carat Weight 1.10 CARAT
Color Grade K
Clarity Grade VS 1
Cut Grade EXCELLENT

ADDITIONAL GRADING INFORMATION

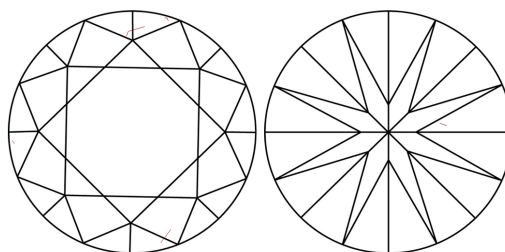
Polish EXCELLENT
Symmetry EXCELLENT
Fluorescence NONE
Inscription(s) IGI 516264526

PROPORTIONS



Sample Image Used

CLARITY CHARACTERISTICS



KEY TO SYMBOLS

Red symbols indicate internal characteristics.
Green symbols indicate external characteristics.

COLOR

D - F	G - J	K - M	N - R	S - Z	FANCY
Colorless	Near Colorless	Slightly Tinted	Very Light Color	Light Color	

CLARITY

IF	VS ¹⁻²	VS ¹⁻²	SI ¹⁻²	I ¹⁻³
Internally Flawless	Very Very Slightly Included	Very Slightly Included	Slightly Included	Included

ADDITIONAL GRADING INFORMATION

Polish EXCELLENT
Symmetry EXCELLENT
Fluorescence NONE
Inscription(s) IGI 516264526



IGI



June 28, 2022
IGI Report No 516264526
NATURAL DIAMOND
ROUND BRILLIANT
6.53 - 6.58 x 4.16 mm
Carat Weight 1.10 CARAT
Color Grade K
Clarity Grade VS 1
Cut Grade EXCELLENT
Depth 63.5%
Table 54.5%
Grade Medium To Slightly Thick (Faceted)
Cut Pointed
Polish EXCELLENT
Symmetry EXCELLENT
Fluorescence NONE
Inscription(s) IGI 516264526