



529250537

**DIAMOND REPORT** **ELECTRONIC COPY**

July 5, 2022  
 IGI Report Number 529250537  
 Description NATURAL DIAMOND  
 Shape and Cutting Style ROUND BRILLIANT  
 Measurements 6.55 - 6.60 x 3.88 mm

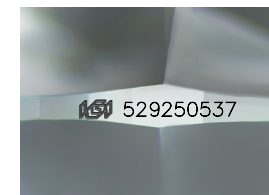
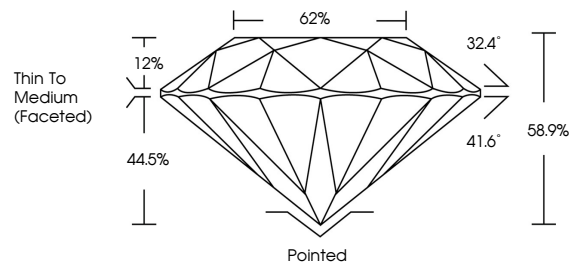
**GRADING RESULTS**

Carat Weight 1.00 CARAT  
 Color Grade H  
 Clarity Grade SI 2  
 Cut Grade EXCELLENT

**ADDITIONAL GRADING INFORMATION**

Polish EXCELLENT  
 Symmetry EXCELLENT  
 Fluorescence NONE  
 Inscription(s) IGI 529250537

**PROPORTIONS**



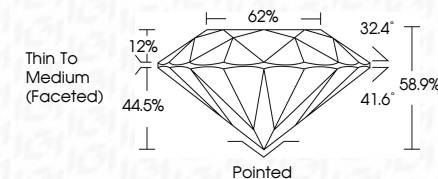
Sample Image Used



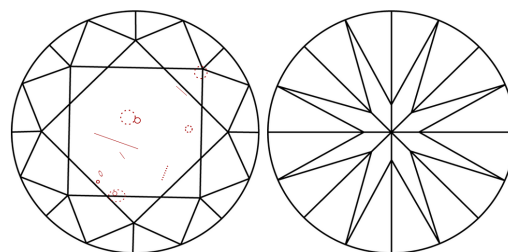
July 5, 2022  
 IGI Report Number 529250537  
 Description NATURAL DIAMOND  
 Shape and Cutting Style ROUND BRILLIANT  
 Measurements 6.55 - 6.60 x 3.88 mm

**GRADING RESULTS**

Carat Weight 1.00 CARAT  
 Color Grade H  
 Clarity Grade SI 2  
 Cut Grade EXCELLENT



**CLARITY CHARACTERISTICS**



**KEY TO SYMBOLS**

Red symbols indicate internal characteristics.  
 Green symbols indicate external characteristics.

**COLOR**

D - F	G - J	K - M	N - R	S - Z	FANCY
Colorless	Near Colorless	Slightly Tinted	Very Light Color	Light Color	

**CLARITY**

IF	VS <sup>1-2</sup>	VS <sup>1-2</sup>	SI <sup>1-2</sup>	I <sup>1-3</sup>
Internally Flawless	Very Very Slightly Included	Very Slightly Included	Slightly Included	Included

**ADDITIONAL GRADING INFORMATION**

Polish EXCELLENT  
 Symmetry EXCELLENT  
 Fluorescence NONE  
 Inscription(s) IGI 529250537



**IGI**

July 5, 2022  
 IGI Report No 529250537  
 NATURAL DIAMOND  
 ROUND BRILLIANT  
 6.55 - 6.60 x 3.88 mm  
 Carat Weight 1.00 CARAT  
 Color Grade H  
 Clarity Grade SI 2  
 Cut Grade EXCELLENT  
 Depth 58.9%  
 Table 62%  
 Girdle Thin To Medium (Faceted)  
 Culet Pointed  
 Polish EXCELLENT  
 Symmetry EXCELLENT  
 Fluorescence NONE  
 Inscription(s) IGI 529250537

