



529250587

DIAMOND REPORT **ELECTRONIC COPY**

July 6, 2022
 IGI Report Number 529250587
 Description NATURAL DIAMOND
 Shape and Cutting Style ROUND BRILLIANT
 Measurements 9.58 - 9.64 x 6.08 mm

GRADING RESULTS

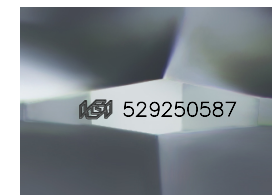
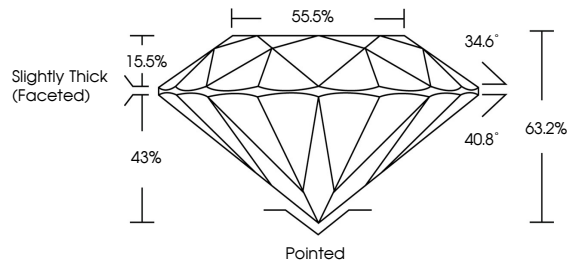
Carat Weight 3.52 CARATS
 Color Grade J
 Clarity Grade SI 2
 Cut Grade EXCELLENT

ADDITIONAL GRADING INFORMATION

Polish EXCELLENT
 Symmetry EXCELLENT
 Fluorescence NONE
 Inscription(s) IGI 529250587



PROPORTIONS



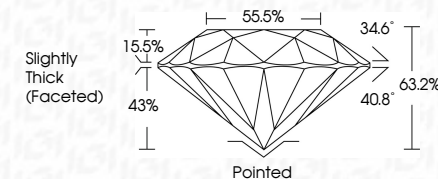
Sample Image Used



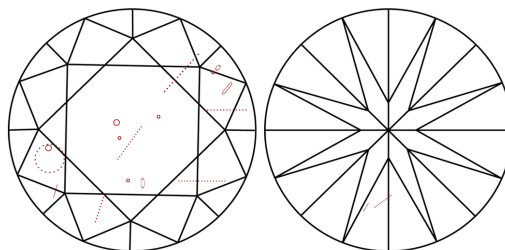
July 6, 2022
 IGI Report Number 529250587
 Description NATURAL DIAMOND
 Shape and Cutting Style ROUND BRILLIANT
 Measurements 9.58 - 9.64 x 6.08 mm

GRADING RESULTS

Carat Weight 3.52 CARATS
 Color Grade J
 Clarity Grade SI 2
 Cut Grade EXCELLENT



CLARITY CHARACTERISTICS



KEY TO SYMBOLS

Red symbols indicate internal characteristics.
 Green symbols indicate external characteristics.

COLOR

D - F	G - J	K - M	N - R	S - Z	FANCY
Colorless	Near Colorless	Slightly Tinted	Very Light Color	Light Color	

CLARITY

IF	VS ¹⁻²	VS ¹⁻²	SI ¹⁻²	I ¹⁻³
Internally Flawless	Very Very Slightly Included	Very Slightly Included	Slightly Included	Included

ADDITIONAL GRADING INFORMATION

Polish EXCELLENT
 Symmetry EXCELLENT
 Fluorescence NONE
 Inscription(s) IGI 529250587



IGI

July 6, 2022
 IGI Report No 529250587
 NATURAL DIAMOND
 ROUND BRILLIANT
 9.58 - 9.64 x 6.08 mm
 Carat Weight 3.52 CARATS
 Color Grade J
 Clarity Grade SI 2
 Cut Grade EXCELLENT
 Depth 63.2%
 Table 55.5%
 Grade Slightly Thick (Faceted)
 Pointed
 EXCELLENT
 EXCELLENT
 NONE
 IGI 529250587