



529250570

**DIAMOND REPORT**      **ELECTRONIC COPY**

July 6, 2022  
 IGI Report Number      529250570  
 Description      NATURAL DIAMOND  
 Shape and Cutting Style      ROUND BRILLIANT  
 Measurements      6.79 - 6.83 x 4.19 mm

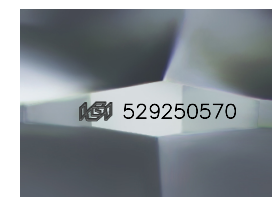
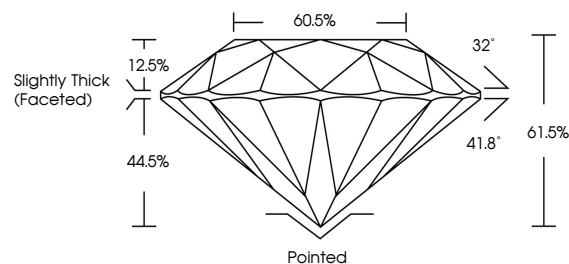
**GRADING RESULTS**

Carat Weight      1.20 CARAT  
 Color Grade      J  
 Clarity Grade      INTERNALLY FLAWLESS  
 Cut Grade      EXCELLENT

**ADDITIONAL GRADING INFORMATION**

Polish      EXCELLENT  
 Symmetry      EXCELLENT  
 Fluorescence      NONE  
 Inscription(s)      IGI 529250570

**PROPORTIONS**



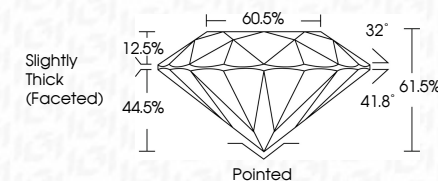
Sample Image Used



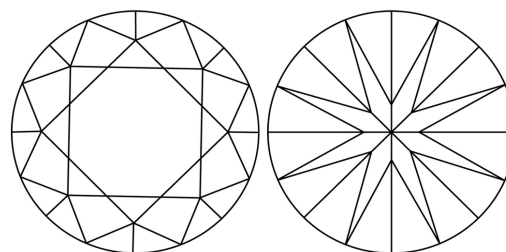
July 6, 2022  
 IGI Report Number      529250570  
 Description      NATURAL DIAMOND  
 Shape and Cutting Style      ROUND BRILLIANT  
 Measurements      6.79 - 6.83 x 4.19 mm

**GRADING RESULTS**

Carat Weight      1.20 CARAT  
 Color Grade      J  
 Clarity Grade      INTERNALLY FLAWLESS  
 Cut Grade      EXCELLENT



**CLARITY CHARACTERISTICS**



**KEY TO SYMBOLS**

Red symbols indicate internal characteristics.  
 Green symbols indicate external characteristics.

**COLOR**

D - F	G - J	K - M	N - R	S - Z	FANCY
Colorless	Near Colorless	Slightly Tinted	Very Light Color	Light Color	

**CLARITY**

IF	VS <sup>1-2</sup>	VS <sup>1-2</sup>	SI <sup>1-2</sup>	I <sup>1-3</sup>
Internally Flawless	Very Very Slightly Included	Very Slightly Included	Slightly Included	Included

**ADDITIONAL GRADING INFORMATION**

Polish      EXCELLENT  
 Symmetry      EXCELLENT  
 Fluorescence      NONE  
 Inscription(s)      IGI 529250570



**IGI**

July 6, 2022  
 IGI Report No 529250570  
 NATURAL DIAMOND  
 ROUND BRILLIANT  
 6.79 - 6.83 x 4.19 mm  
 Carat Weight      1.20 CARAT  
 Color Grade      J  
 Clarity Grade      IF  
 Cut Grade      EXCELLENT  
 Depth      61.5%  
 Table      60.5%  
 Grade      Slightly Thick (Faceted)  
 Cut      Pointed  
 Polish      EXCELLENT  
 Symmetry      EXCELLENT  
 Fluorescence      NONE  
 Inscription(s)      IGI 529250570