



529250689

DIAMOND REPORT ELECTRONIC COPY

July 28, 2022
IGI Report Number 529250689
Description NATURAL DIAMOND
Shape and Cutting Style ROUND BRILLIANT
Measurements 7.64 - 7.70 x 4.81 mm

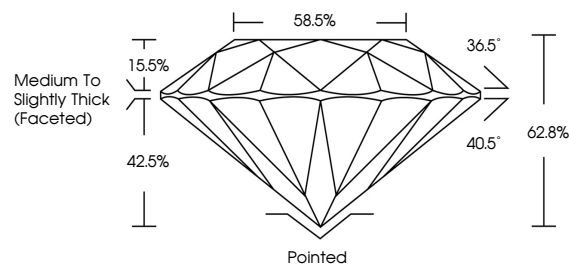
GRADING RESULTS

Carat Weight 1.80 CARAT
Color Grade G
Clarity Grade SI 2
Cut Grade EXCELLENT

ADDITIONAL GRADING INFORMATION

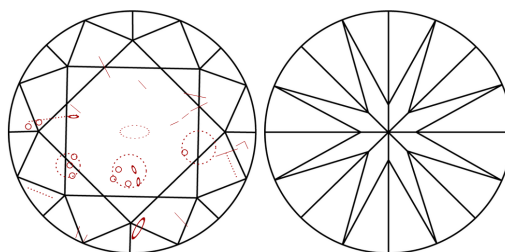
Polish EXCELLENT
Symmetry EXCELLENT
Fluorescence NONE
Inscription(s) IGI 529250689

PROPORTIONS



Sample Image Used

CLARITY CHARACTERISTICS



KEY TO SYMBOLS

Red symbols indicate internal characteristics.
Green symbols indicate external characteristics.

COLOR

Table with columns for color grades (D-F, G-J, K-M, N-R, S-Z, FANCY) and corresponding descriptions (Colorless, Near Colorless, Slightly Tinted, Very Light Color, Light Color).

CLARITY

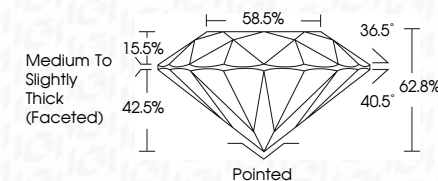
Table with columns for clarity grades (IF, VS 1-2, VS 1-2, SI 1-2, I 1-3) and corresponding descriptions (Internally Flawless, Very Very Slightly Included, Very Slightly Included, Slightly Included, Included).



July 28, 2022
IGI Report Number 529250689
Description NATURAL DIAMOND
Shape and Cutting Style ROUND BRILLIANT
Measurements 7.64 - 7.70 x 4.81 mm

GRADING RESULTS

Carat Weight 1.80 CARAT
Color Grade G
Clarity Grade SI 2
Cut Grade EXCELLENT



ADDITIONAL GRADING INFORMATION

Polish EXCELLENT
Symmetry EXCELLENT
Fluorescence NONE
Inscription(s) IGI 529250689



July 28, 2022
IGI Report No 529250689
NATURAL DIAMOND
ROUND BRILLIANT
7.64 - 7.70 x 4.81 mm
Carat Weight 1.80 CARAT
Color Grade G
Clarity Grade SI 2
Cut Grade EXCELLENT
Depth 62.8%
Table 58.5%
Girdle Medium To Slightly Thick (Faceted)
Culet Pointed
Polish EXCELLENT
Symmetry EXCELLENT
Fluorescence NONE
Inscription(s) IGI 529250689