



529250726

**DIAMOND REPORT**

**ELECTRONIC COPY**

August 8, 2022  
 IGI Report Number 529250726  
 Description NATURAL DIAMOND  
 Shape and Cutting Style ROUND BRILLIANT  
 Measurements 6.65 - 6.71 x 4.25 mm

**GRADING RESULTS**

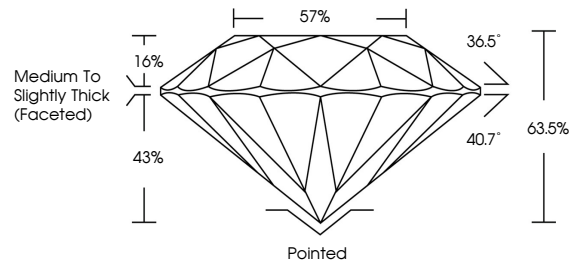
Carat Weight 1.20 CARAT  
 Color Grade J  
 Clarity Grade SI 2  
 Cut Grade EXCELLENT

**ADDITIONAL GRADING INFORMATION**

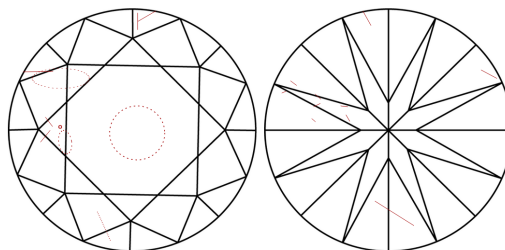
Polish EXCELLENT  
 Symmetry EXCELLENT  
 Fluorescence NONE  
 Inscription(s) IGI 529250726



**PROPORTIONS**

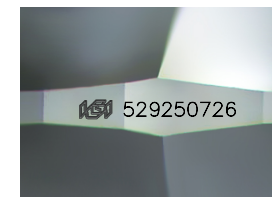


**CLARITY CHARACTERISTICS**



**KEY TO SYMBOLS**

Red symbols indicate internal characteristics.  
 Green symbols indicate external characteristics.



Sample Image Used

**COLOR**

D - F	G - J	K - M	N - R	S - Z	FANCY
Colorless	Near Colorless	Slightly Tinted	Very Light Color	Light Color	

**CLARITY**

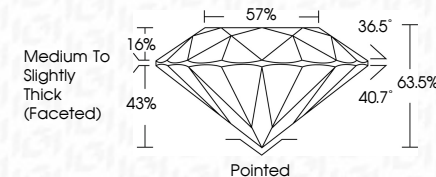
IF	VS <sup>1-2</sup>	VS <sup>1-2</sup>	SI <sup>1-2</sup>	I <sup>1-3</sup>
Internally Flawless	Very Very Slightly Included	Very Slightly Included	Slightly Included	Included



August 8, 2022  
 IGI Report Number 529250726  
 Description NATURAL DIAMOND  
 Shape and Cutting Style ROUND BRILLIANT  
 Measurements 6.65 - 6.71 x 4.25 mm

**GRADING RESULTS**

Carat Weight 1.20 CARAT  
 Color Grade J  
 Clarity Grade SI 2  
 Cut Grade EXCELLENT



**ADDITIONAL GRADING INFORMATION**

Polish EXCELLENT  
 Symmetry EXCELLENT  
 Fluorescence NONE  
 Inscription(s) IGI 529250726



**IGI**

August 8, 2022  
 IGI Report No 529250726  
 NATURAL DIAMOND  
 ROUND BRILLIANT  
 6.65 - 6.71 x 4.25 mm  
 Carat Weight 1.20 CARAT  
 Color Grade J  
 Clarity Grade SI 2  
 Cut Grade EXCELLENT  
 Depth 63.5%  
 Table 57%  
 Girdle Medium To Slightly Thick (Faceted)  
 Culet Pointed  
 Polish EXCELLENT  
 Symmetry EXCELLENT  
 Fluorescence NONE  
 Inscription(s) IGI 529250726