



529250786

DIAMOND REPORT **ELECTRONIC COPY**

August 29, 2022
 IGI Report Number 529250786
 Description NATURAL DIAMOND
 Shape and Cutting Style ROUND BRILLIANT
 Measurements 6.29 - 6.33 x 3.98 mm

GRADING RESULTS

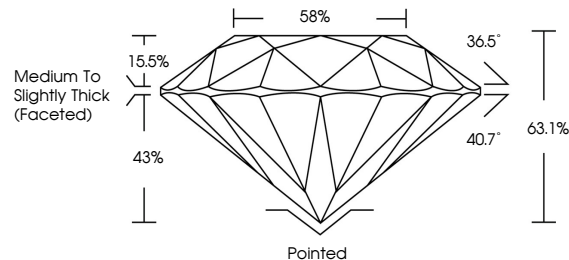
Carat Weight 1.00 CARAT
 Color Grade H
 Clarity Grade SI 1
 Cut Grade EXCELLENT

ADDITIONAL GRADING INFORMATION

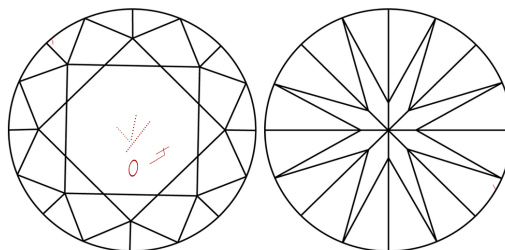
Polish EXCELLENT
 Symmetry EXCELLENT
 Fluorescence NONE
 Inscription(s) IGI 529250786



PROPORTIONS

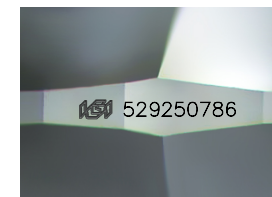


CLARITY CHARACTERISTICS



KEY TO SYMBOLS

Red symbols indicate internal characteristics.
 Green symbols indicate external characteristics.



Sample Image Used

COLOR

D - F	G - J	K - M	N - R	S - Z	FANCY
Colorless	Near Colorless	Slightly Tinted	Very Light Color	Light Color	

CLARITY

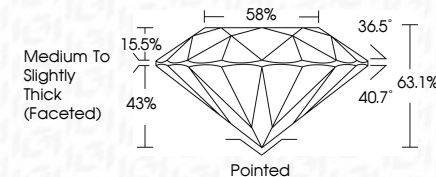
IF	VS ¹⁻²	VS ¹⁻²	SI ¹⁻²	I ¹⁻³
Internally Flawless	Very Very Slightly Included	Very Slightly Included	Slightly Included	Included



August 29, 2022
 IGI Report Number 529250786
 Description NATURAL DIAMOND
 Shape and Cutting Style ROUND BRILLIANT
 Measurements 6.29 - 6.33 x 3.98 mm

GRADING RESULTS

Carat Weight 1.00 CARAT
 Color Grade H
 Clarity Grade SI 1
 Cut Grade EXCELLENT



ADDITIONAL GRADING INFORMATION

Polish EXCELLENT
 Symmetry EXCELLENT
 Fluorescence NONE
 Inscription(s) IGI 529250786



IGI

August 29, 2022
 IGI Report No 529250786
 NATURAL DIAMOND
 ROUND BRILLIANT
 6.29 - 6.33 x 3.98 mm
 Carat Weight 1.00 CARAT
 Color Grade H
 Clarity Grade SI 1
 Cut Grade EXCELLENT
 Depth 63.1%
 Table 15.5%
 Grade Medium To Slightly Thick (Faceted)
 Cut Pointed
 Polish EXCELLENT
 Symmetry EXCELLENT
 Fluorescence NONE
 Inscription(s) IGI 529250786

