



529250796

DIAMOND REPORT

ELECTRONIC COPY

August 24, 2022
IGI Report Number 529250796
Description NATURAL DIAMOND
Shape and Cutting Style ROUND BRILLIANT
Measurements 7.40 - 7.44 x 4.68 mm

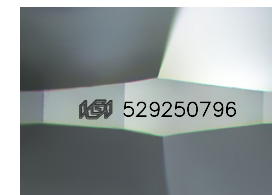
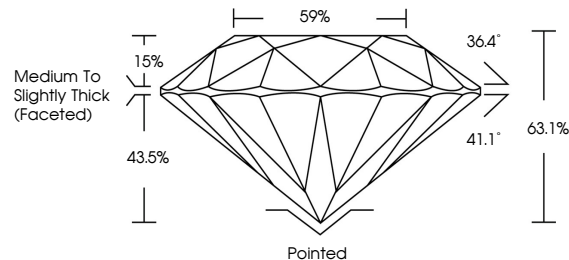
GRADING RESULTS

Carat Weight 1.62 CARAT
Color Grade K
Clarity Grade INTERNALLY FLAWLESS
Cut Grade EXCELLENT

ADDITIONAL GRADING INFORMATION

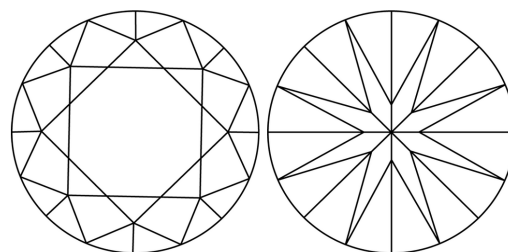
Polish EXCELLENT
Symmetry EXCELLENT
Fluorescence NONE
Inscription(s) IGI 529250796

PROPORTIONS



Sample Image Used

CLARITY CHARACTERISTICS



KEY TO SYMBOLS

Red symbols indicate internal characteristics.
Green symbols indicate external characteristics.

COLOR

Table with columns D-F, G-J, K-M, N-R, S-Z, FANCY and rows Colorless, Near Colorless, Slightly Tinted, Very Light Color, Light Color.

CLARITY

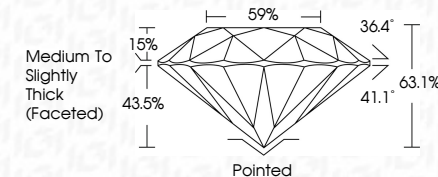
Table with columns IF, VS 1-2, VS 1-2, SI 1-2, I 1-3 and rows Internally Flawless, Very Very Slightly Included, Very Slightly Included, Slightly Included, Included.



August 24, 2022
IGI Report Number 529250796
Description NATURAL DIAMOND
Shape and Cutting Style ROUND BRILLIANT
Measurements 7.40 - 7.44 x 4.68 mm

GRADING RESULTS

Carat Weight 1.62 CARAT
Color Grade K
Clarity Grade INTERNALLY FLAWLESS
Cut Grade EXCELLENT



ADDITIONAL GRADING INFORMATION

Polish EXCELLENT
Symmetry EXCELLENT
Fluorescence NONE
Inscription(s) IGI 529250796



IGI



August 24, 2022
IGI Report No. 529250796
NATURAL DIAMOND
ROUND BRILLIANT
7.40 - 7.44 x 4.68 mm
Carat Weight 1.62 CARAT
Color Grade K
Clarity Grade IF
Cut Grade EXCELLENT
Depth 63.1%
Table 59%
Grade Medium To Slightly Thick (Faceted)
Culet Pointed
Polish EXCELLENT
Symmetry EXCELLENT
Fluorescence NONE
Inscription(s) IGI 529250796