



529250862

DIAMOND REPORT **ELECTRONIC COPY**

August 29, 2022
 IGI Report Number 529250862
 Description NATURAL DIAMOND
 Shape and Cutting Style ROUND BRILLIANT
 Measurements 9.79 - 9.86 x 6.24 mm

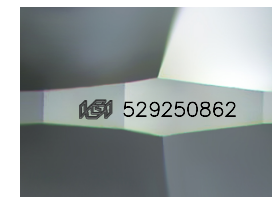
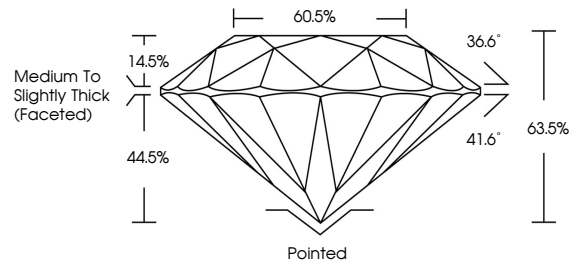
GRADING RESULTS

Carat Weight 3.80 CARATS
 Color Grade L
 Clarity Grade VS 2
 Cut Grade EXCELLENT

ADDITIONAL GRADING INFORMATION

Polish EXCELLENT
 Symmetry EXCELLENT
 Fluorescence NONE
 Inscription(s) IGI 529250862

PROPORTIONS



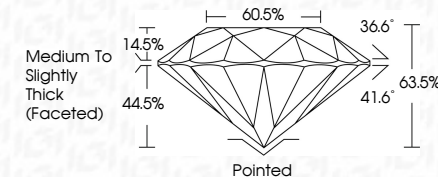
Sample Image Used



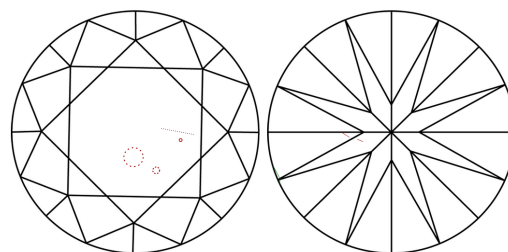
August 29, 2022
 IGI Report Number 529250862
 Description NATURAL DIAMOND
 Shape and Cutting Style ROUND BRILLIANT
 Measurements 9.79 - 9.86 x 6.24 mm

GRADING RESULTS

Carat Weight 3.80 CARATS
 Color Grade L
 Clarity Grade VS 2
 Cut Grade EXCELLENT



CLARITY CHARACTERISTICS



KEY TO SYMBOLS

Red symbols indicate internal characteristics.
 Green symbols indicate external characteristics.

COLOR

D - F	G - J	K - M	N - R	S - Z	FANCY
Colorless	Near Colorless	Slightly Tinted	Very Light Color	Light Color	

CLARITY

IF	VS ¹⁻²	VS ¹⁻²	SI ¹⁻²	I ¹⁻³
Internally Flawless	Very Very Slightly Included	Very Slightly Included	Slightly Included	Included

ADDITIONAL GRADING INFORMATION

Polish EXCELLENT
 Symmetry EXCELLENT
 Fluorescence NONE
 Inscription(s) IGI 529250862



IGI

August 29, 2022
 IGI Report No 529250862
 NATURAL DIAMOND
 ROUND BRILLIANT
 9.79 - 9.86 x 6.24 mm
 Carat Weight 3.80 CARATS
 Color Grade L
 Clarity Grade VS 2
 Cut Grade EXCELLENT
 Depth 63.5%
 Table 60.5%
 Girdle Medium To Slightly Thick (Faceted)
 Culet Pointed
 Polish EXCELLENT
 Symmetry EXCELLENT
 Fluorescence NONE
 Inscription(s) IGI 529250862