



**INTERNATIONAL  
GEMOLOGICAL  
INSTITUTE**

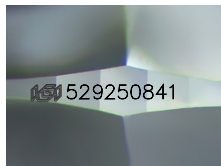
529250841



September 6, 2022  
IGI Report Number 529250841  
NATURAL DIAMOND  
ROUND BRILLIANT  
5.21 - 5.24 x 3.01 mm  
Carat Weight 0.50 CARAT  
Color Grade H  
Clarity Grade SI 2  
Cut Grade EXCELLENT  
Polish EXCELLENT  
Symmetry EXCELLENT  
Fluorescence NONE  
Inscription(s) IGI 529250841

**DIAMOND REPORT**

**ELECTRONIC COPY**



Sample Image Used

September 6, 2022  
IGI Report Number 529250841  
Description NATURAL DIAMOND  
Shape and Cutting Style ROUND BRILLIANT  
Measurements 5.21 - 5.24 x 3.01 mm

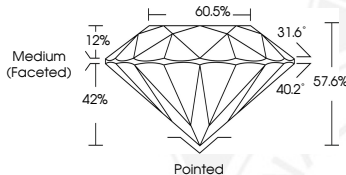
**GRADING RESULTS**

Carat Weight 0.50 CARAT  
Color Grade H  
Clarity Grade SI 2  
Cut Grade EXCELLENT

**ADDITIONAL GRADING INFORMATION**

Polish EXCELLENT  
Symmetry EXCELLENT  
Fluorescence NONE

Identification Features FEATHER, CRYSTAL, CLOUD  
Inscription(s) IGI 529250841



**COLOR**

D - F	G - J	K - M	N - R	S - Z	FANCY
Colorless	Near Colorless	Slightly Tinted	Very Light Color	Light Color	

**CLARITY**

IF	VS <sup>1-2</sup>	VS <sup>1-2</sup>	SI <sup>1-2</sup>	I <sup>1-2</sup>
Internally Flawless	Very Very Slightly Included	Very Slightly Included	Slightly Included	Included



September 6, 2022  
IGI Report Number 529250841  
NATURAL DIAMOND  
ROUND BRILLIANT  
5.21 - 5.24 x 3.01 mm  
Carat Weight 0.50 CARAT  
Color Grade H  
Clarity Grade SI 2  
Cut Grade EXCELLENT  
Polish EXCELLENT  
Symmetry EXCELLENT  
Fluorescence NONE  
Inscription(s) IGI 529250841



THIS DOCUMENT WAS PRODUCED WITH THE FOLLOWING SECURITY MEASURES: SPECIAL DOCUMENT PAPER, INK SCREENS, WATERMARK, BACKGROUND DESIGN, HOLOGRAM AND OTHER SECURITY FEATURES NOT LISTED AND DO EXCEED DOCUMENT SECURITY INDUSTRY GUIDELINES.