



541288561

DIAMOND REPORT

ELECTRONIC COPY



September 7, 2022
IGI Report Number 541288561
Description NATURAL DIAMOND
Shape and Cutting Style ROUND BRILLIANT
Measurements 7.85 - 7.89 x 4.72 mm

GRADING RESULTS

Carat Weight 1.80 CARAT
Color Grade J
Clarity Grade SI 2
Cut Grade EXCELLENT

September 7, 2022
IGI Report Number 541288561
Description NATURAL DIAMOND
Shape and Cutting Style ROUND BRILLIANT
Measurements 7.85 - 7.89 x 4.72 mm

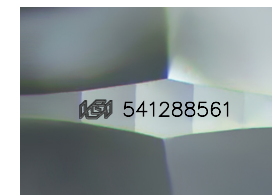
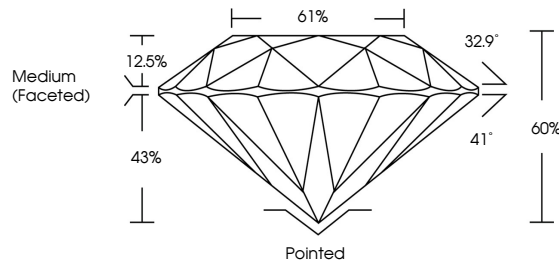
GRADING RESULTS

Carat Weight 1.80 CARAT
Color Grade J
Clarity Grade SI 2
Cut Grade EXCELLENT

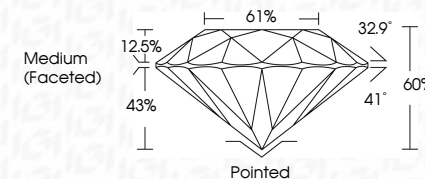
ADDITIONAL GRADING INFORMATION

Polish VERY GOOD
Symmetry EXCELLENT
Fluorescence NONE
Inscription(s) IGI 541288561

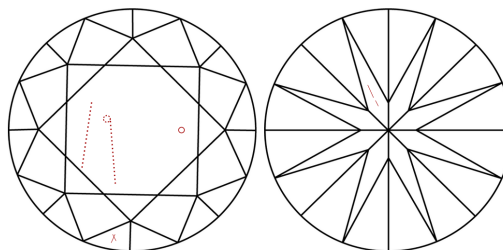
PROPORTIONS



Sample Image Used



CLARITY CHARACTERISTICS



KEY TO SYMBOLS

Red symbols indicate internal characteristics.
Green symbols indicate external characteristics.

COLOR

D - F	G - J	K - M	N - R	S - Z	FANCY
Colorless	Near Colorless	Slightly Tinted	Very Light Color	Light Color	

CLARITY

IF	VS ¹⁻²	VS ¹⁻²	SI ¹⁻²	I ¹⁻³
Internally Flawless	Very Very Slightly Included	Very Slightly Included	Slightly Included	Included

ADDITIONAL GRADING INFORMATION

Polish VERY GOOD
Symmetry EXCELLENT
Fluorescence NONE
Inscription(s) IGI 541288561



IGI



September 7, 2022
IGI Report No 541288561
NATURAL DIAMOND
ROUND BRILLIANT
7.85 - 7.89 x 4.72 mm
Carat Weight 1.80 CARAT
Color Grade J
Clarity Grade SI 2
Cut Grade EXCELLENT
Depth 60%
Table 61%
Girdle Medium (Faceted)
Crown Pointed
Pavilion VERY GOOD
Symmetry EXCELLENT
Fluorescence NONE
Inscription(s) IGI 541288561