



541288566

DIAMOND REPORT

ELECTRONIC COPY

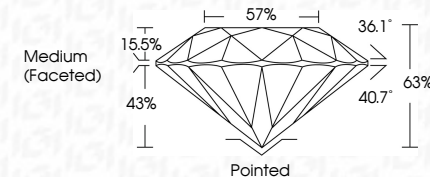


September 13, 2022

IGI Report Number 541288566
Description NATURAL DIAMOND
Shape and Cutting Style ROUND BRILLIANT
Measurements 6.72 - 6.75 x 4.24 mm

GRADING RESULTS

Carat Weight 1.21 CARAT
Color Grade I
Clarity Grade SI 1
Cut Grade EXCELLENT



September 13, 2022

IGI Report Number 541288566
Description NATURAL DIAMOND
Shape and Cutting Style ROUND BRILLIANT
Measurements 6.72 - 6.75 x 4.24 mm

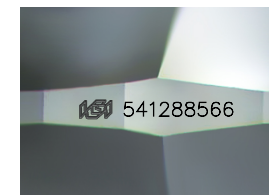
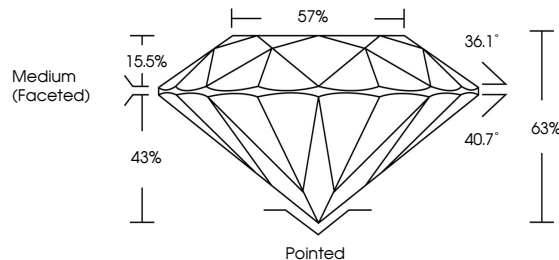
GRADING RESULTS

Carat Weight 1.21 CARAT
Color Grade I
Clarity Grade SI 1
Cut Grade EXCELLENT

ADDITIONAL GRADING INFORMATION

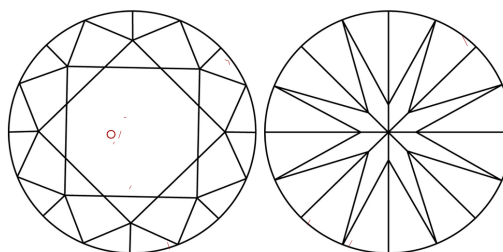
Polish EXCELLENT
Symmetry EXCELLENT
Fluorescence NONE
Inscription(s) IGI 541288566

PROPORTIONS



Sample Image Used

CLARITY CHARACTERISTICS



KEY TO SYMBOLS

Red symbols indicate internal characteristics.
Green symbols indicate external characteristics.

COLOR

D - F	G - J	K - M	N - R	S - Z	FANCY
Colorless	Near Colorless	Slightly Tinted	Very Light Color	Light Color	

CLARITY

IF	VS ¹⁻²	VS ¹⁻²	SI ¹⁻²	I ¹⁻³
Internally Flawless	Very Very Slightly Included	Very Slightly Included	Slightly Included	Included

ADDITIONAL GRADING INFORMATION

Polish EXCELLENT
Symmetry EXCELLENT
Fluorescence NONE
Inscription(s) IGI 541288566



IGI

September 13, 2022
IGI Report No 541288566
NATURAL DIAMOND
ROUND BRILLIANT
6.72 - 6.75 x 4.24 mm
Carat Weight 1.21 CARAT
Color Grade SI 1
Clarity Grade EXCELLENT
Cut Grade EXCELLENT
Depth 63%
Table 57%
Girdle Medium (Faceted)
Culet Pointed
Polish EXCELLENT
Symmetry EXCELLENT
Fluorescence NONE
Inscription(s) IGI 541288566

