



541288588

**DIAMOND REPORT** **ELECTRONIC COPY**

September 12, 2022  
 IGI Report Number 541288588  
 Description NATURAL DIAMOND  
 Shape and Cutting Style ROUND BRILLIANT  
 Measurements 8.58 - 8.63 x 5.39 mm

**GRADING RESULTS**

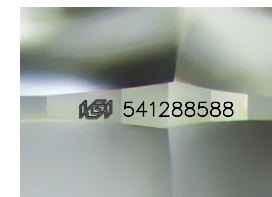
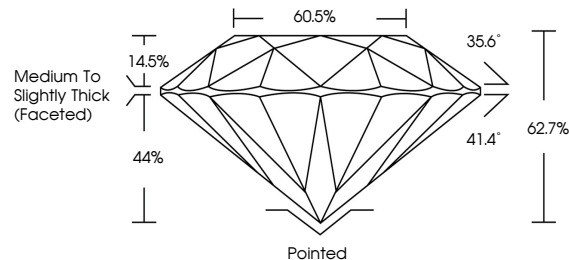
Carat Weight 2.50 CARATS  
 Color Grade J  
 Clarity Grade VVS 1  
 Cut Grade EXCELLENT

**ADDITIONAL GRADING INFORMATION**

Polish EXCELLENT  
 Symmetry EXCELLENT  
 Fluorescence NONE  
 Inscription(s) IGI 541288588



**PROPORTIONS**



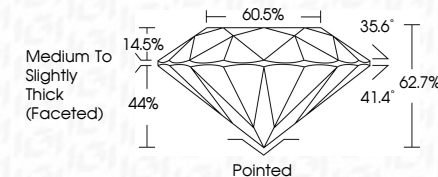
Sample Image Used



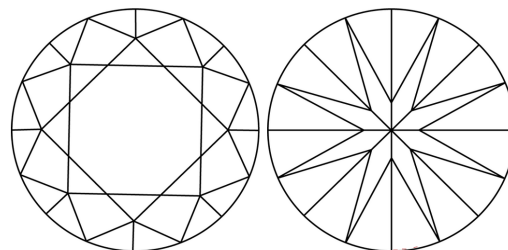
September 12, 2022  
 IGI Report Number 541288588  
 Description NATURAL DIAMOND  
 Shape and Cutting Style ROUND BRILLIANT  
 Measurements 8.58 - 8.63 x 5.39 mm

**GRADING RESULTS**

Carat Weight 2.50 CARATS  
 Color Grade J  
 Clarity Grade VVS 1  
 Cut Grade EXCELLENT



**CLARITY CHARACTERISTICS**



**KEY TO SYMBOLS**

Red symbols indicate internal characteristics.  
 Green symbols indicate external characteristics.

**COLOR**

D - F	G - J	K - M	N - R	S - Z	FANCY
Colorless	Near Colorless	Slightly Tinted	Very Light Color	Light Color	

**CLARITY**

IF	VS <sup>1-2</sup>	VS <sup>1-2</sup>	SI <sup>1-2</sup>	I <sup>1-3</sup>
Internally Flawless	Very Very Slightly Included	Very Slightly Included	Slightly Included	Included

**ADDITIONAL GRADING INFORMATION**

Polish EXCELLENT  
 Symmetry EXCELLENT  
 Fluorescence NONE  
 Inscription(s) IGI 541288588



**IGI**

September 12, 2022  
 IGI Report No 541288588  
 NATURAL DIAMOND  
 ROUND BRILLIANT  
 8.58 - 8.63 x 5.39 mm  
 Carat Weight 2.50 CARATS  
 Color Grade J  
 Clarity Grade VVS 1  
 Cut Grade EXCELLENT  
 Depth 62.7%  
 Table 60.5%  
 Grade Medium To Slightly Thick (Faceted)  
 Culet Pointed  
 Polish EXCELLENT  
 Symmetry EXCELLENT  
 Fluorescence NONE  
 Inscription(s) IGI 541288588