



541288638

DIAMOND REPORT

ELECTRONIC COPY



September 19, 2022

IGI Report Number 541288638
Description NATURAL DIAMOND
Shape and Cutting Style ROUND BRILLIANT
Measurements 6.53 - 6.58 x 4.13 mm

GRADING RESULTS

Carat Weight 1.12 CARAT
Color Grade J
Clarity Grade VS 2
Cut Grade EXCELLENT

September 19, 2022

IGI Report Number 541288638
Description NATURAL DIAMOND
Shape and Cutting Style ROUND BRILLIANT
Measurements 6.53 - 6.58 x 4.13 mm

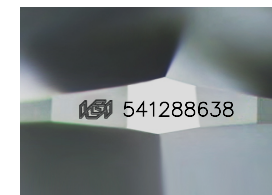
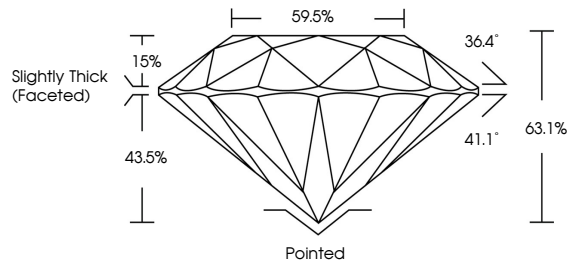
GRADING RESULTS

Carat Weight 1.12 CARAT
Color Grade J
Clarity Grade VS 2
Cut Grade EXCELLENT

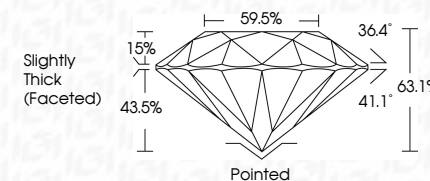
ADDITIONAL GRADING INFORMATION

Polish EXCELLENT
Symmetry EXCELLENT
Fluorescence NONE
Inscription(s) IGI 541288638

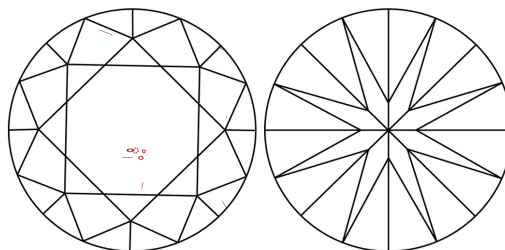
PROPORTIONS



Sample Image Used



CLARITY CHARACTERISTICS



KEY TO SYMBOLS

Red symbols indicate internal characteristics.
Green symbols indicate external characteristics.

COLOR

D - F	G - J	K - M	N - R	S - Z	FANCY
Colorless	Near Colorless	Slightly Tinted	Very Light Color	Light Color	

CLARITY

IF	VS ¹⁻²	VS ¹⁻²	SI ¹⁻²	I ¹⁻³
Internally Flawless	Very Very Slightly Included	Very Slightly Included	Slightly Included	Included

ADDITIONAL GRADING INFORMATION

Polish EXCELLENT
Symmetry EXCELLENT
Fluorescence NONE
Inscription(s) IGI 541288638



IGI

September 19, 2022
IGI Report No 541288638
NATURAL DIAMOND
ROUND BRILLIANT
6.53 - 6.58 x 4.13 mm
Carat Weight 1.12 CARAT
Color Grade J
Clarity Grade VS 2
Cut Grade EXCELLENT
Depth 63.1%
Table 59.5%
Girdle Slightly Thick (Faceted)
Culet Pointed
Polish EXCELLENT
Symmetry EXCELLENT
Fluorescence NONE
Inscription(s) IGI 541288638