



541288623

DIAMOND REPORT **ELECTRONIC COPY**



September 19, 2022
IGI Report Number 541288623
Description NATURAL DIAMOND
Shape and Cutting Style ROUND BRILLIANT
Measurements 7.03 - 7.06 x 4.19 mm

GRADING RESULTS

Carat Weight 1.30 CARAT
Color Grade J
Clarity Grade VS 2
Cut Grade EXCELLENT

September 19, 2022
IGI Report Number 541288623
Description NATURAL DIAMOND
Shape and Cutting Style ROUND BRILLIANT
Measurements 7.03 - 7.06 x 4.19 mm

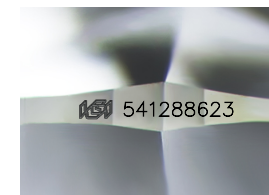
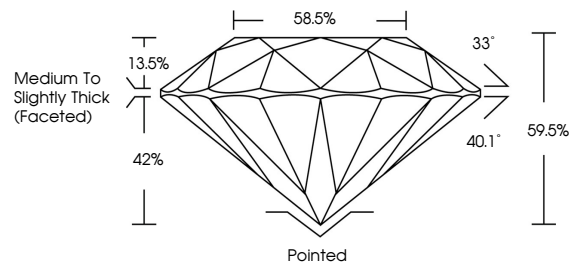
GRADING RESULTS

Carat Weight 1.30 CARAT
Color Grade J
Clarity Grade VS 2
Cut Grade EXCELLENT

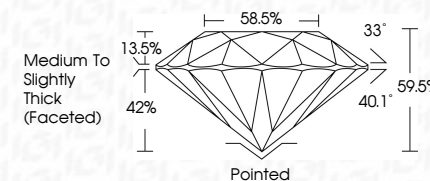
ADDITIONAL GRADING INFORMATION

Polish EXCELLENT
Symmetry EXCELLENT
Fluorescence NONE
Inscription(s) IGI 541288623
Comments: IDEAL CUT ROUND BRILLIANT

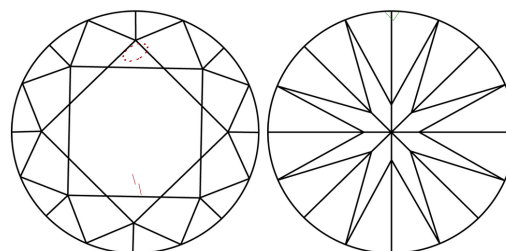
PROPORTIONS



Sample Image Used



CLARITY CHARACTERISTICS



KEY TO SYMBOLS

Red symbols indicate internal characteristics.
Green symbols indicate external characteristics.

COLOR

D - F	G - J	K - M	N - R	S - Z	FANCY
Colorless	Near Colorless	Slightly Tinted	Very Light Color	Light Color	

CLARITY

IF	VS ¹⁻²	VS ¹⁻²	SI ¹⁻²	I ¹⁻³
Internally Flawless	Very Very Slightly Included	Very Slightly Included	Slightly Included	Included

ADDITIONAL GRADING INFORMATION

Polish EXCELLENT
Symmetry EXCELLENT
Fluorescence NONE
Inscription(s) IGI 541288623
Comments: IDEAL CUT ROUND BRILLIANT



IGI



September 19, 2022
IGI Report No 541288623
NATURAL DIAMOND
ROUND BRILLIANT
7.03 - 7.06 x 4.19 mm
Carat Weight 1.30 CARAT
Color Grade J
Clarity Grade VS 2
Cut Grade EXCELLENT
Depth 59.5%
Table 58.5%
Girdle Medium To Slightly Thick (Faceted)
Culet Pointed
Polish EXCELLENT
Symmetry EXCELLENT
Fluorescence NONE
Inscriptions IGI 541288623
Comments: IDEAL CUT ROUND BRILLIANT