



541288573

DIAMOND REPORT **ELECTRONIC COPY**

September 6, 2022
 IGI Report Number 541288573
 Description NATURAL DIAMOND
 Shape and Cutting Style ROUND BRILLIANT
 Measurements 9.59 - 9.64 x 6.05 mm

GRADING RESULTS

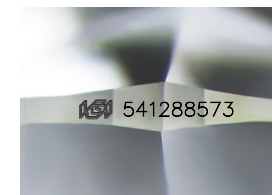
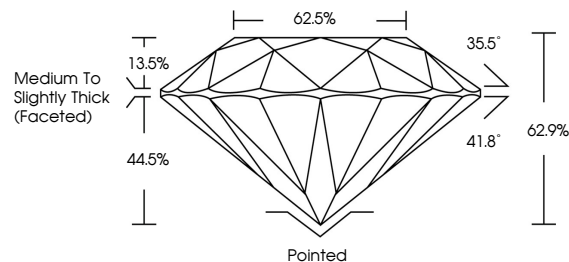
Carat Weight 3.50 CARATS
 Color Grade J
 Clarity Grade VS 1
 Cut Grade EXCELLENT

ADDITIONAL GRADING INFORMATION

Polish EXCELLENT
 Symmetry EXCELLENT
 Fluorescence NONE
 Inscription(s) IGI 541288573

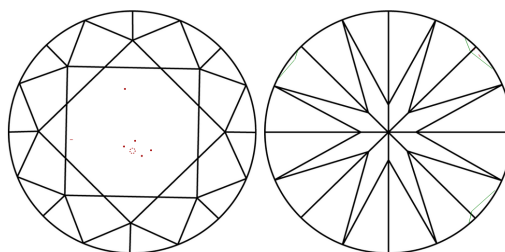


PROPORTIONS



Sample Image Used

CLARITY CHARACTERISTICS



KEY TO SYMBOLS

Red symbols indicate internal characteristics.
 Green symbols indicate external characteristics.

COLOR

D - F	G - J	K - M	N - R	S - Z	FANCY
Colorless	Near Colorless	Slightly Tinted	Very Light Color	Light Color	

CLARITY

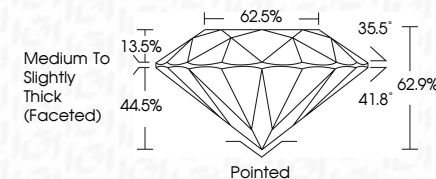
IF	VS ¹⁻²	VS ¹⁻²	SI ¹⁻²	I ¹⁻³
Internally Flawless	Very Very Slightly Included	Very Slightly Included	Slightly Included	Included



September 6, 2022
 IGI Report Number 541288573
 Description NATURAL DIAMOND
 Shape and Cutting Style ROUND BRILLIANT
 Measurements 9.59 - 9.64 x 6.05 mm

GRADING RESULTS

Carat Weight 3.50 CARATS
 Color Grade J
 Clarity Grade VS 1
 Cut Grade EXCELLENT



ADDITIONAL GRADING INFORMATION

Polish EXCELLENT
 Symmetry EXCELLENT
 Fluorescence NONE
 Inscription(s) IGI 541288573



IGI

September 6, 2022
 IGI Report No 541288573
 NATURAL DIAMOND
 ROUND BRILLIANT
 9.59 - 9.64 x 6.05 mm
 Carat Weight 3.50 CARATS
 Color Grade J
 Clarity Grade VS 1
 Cut Grade EXCELLENT
 Depth 62.9%
 Table 62.5%
 Girdle Medium To Slightly Thick (Faceted)
 Culet Pointed
 Polish EXCELLENT
 Symmetry EXCELLENT
 Fluorescence NONE
 Inscription(s) IGI 541288573