



541288817

**DIAMOND REPORT**

**ELECTRONIC COPY**



October 19, 2022  
IGI Report Number 541288817  
Description NATURAL DIAMOND  
Shape and Cutting Style ROUND BRILLIANT  
Measurements 8.21 - 8.27 x 4.91 mm

**GRADING RESULTS**

Carat Weight 2.01 CARATS  
Color Grade J  
Clarity Grade SI 2  
Cut Grade EXCELLENT

October 19, 2022  
IGI Report Number 541288817  
Description NATURAL DIAMOND  
Shape and Cutting Style ROUND BRILLIANT  
Measurements 8.21 - 8.27 x 4.91 mm

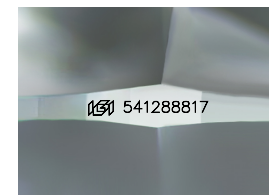
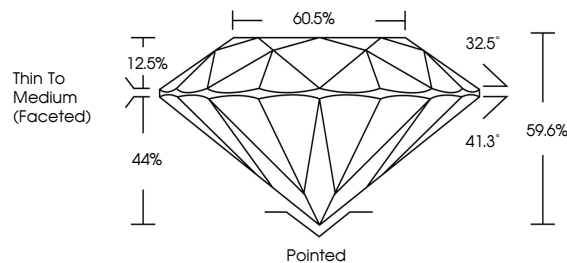
**GRADING RESULTS**

Carat Weight 2.01 CARATS  
Color Grade J  
Clarity Grade SI 2  
Cut Grade EXCELLENT

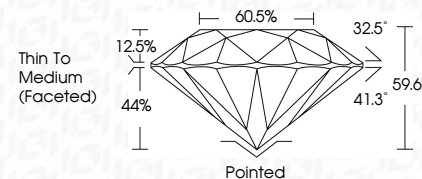
**ADDITIONAL GRADING INFORMATION**

Polish EXCELLENT  
Symmetry EXCELLENT  
Fluorescence NONE  
Inscription(s) IGI 541288817

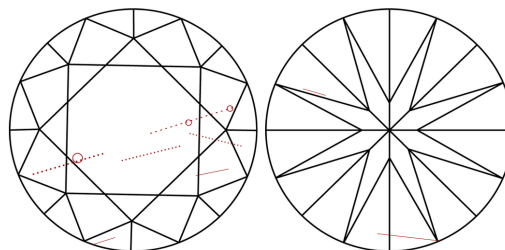
**PROPORTIONS**



Sample Image Used



**CLARITY CHARACTERISTICS**



**KEY TO SYMBOLS**

Red symbols indicate internal characteristics.  
Green symbols indicate external characteristics.

**COLOR**

D - F	G - J	K - M	N - R	S - Z	FANCY
Colorless	Near Colorless	Slightly Tinted	Very Light Color	Light Color	

**CLARITY**

IF	VS 1-2	VS 1-2	SI 1-2	I 1-3
Internally Flawless	Very Very Slightly Included	Very Slightly Included	Slightly Included	Included

**ADDITIONAL GRADING INFORMATION**

Polish EXCELLENT  
Symmetry EXCELLENT  
Fluorescence NONE  
Inscription(s) IGI 541288817



**IGI**

October 19, 2022  
IGI Report No 541288817  
NATURAL DIAMOND  
ROUND BRILLIANT  
8.21 - 8.27 x 4.91 mm  
Carat Weight 2.01 CARATS  
Color Grade J  
Clarity Grade SI 2  
Cut Grade EXCELLENT  
Depth 59.6%  
Table 60.5%  
Girdle Thin To Medium (Faceted)  
Culet Pointed  
Polish EXCELLENT  
Symmetry EXCELLENT  
Fluorescence NONE  
Inscription(s) IGI 541288817