



54128808

**DIAMOND REPORT**

**ELECTRONIC COPY**



October 19, 2022  
IGI Report Number 54128808  
Description NATURAL DIAMOND  
Shape and Cutting Style ROUND BRILLIANT  
Measurements 6.36 - 6.40 x 3.93 mm

**GRADING RESULTS**

Carat Weight 1.00 CARAT  
Color Grade I  
Clarity Grade SI 2  
Cut Grade EXCELLENT

October 19, 2022  
IGI Report Number 54128808  
Description NATURAL DIAMOND  
Shape and Cutting Style ROUND BRILLIANT  
Measurements 6.36 - 6.40 x 3.93 mm

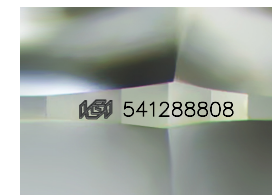
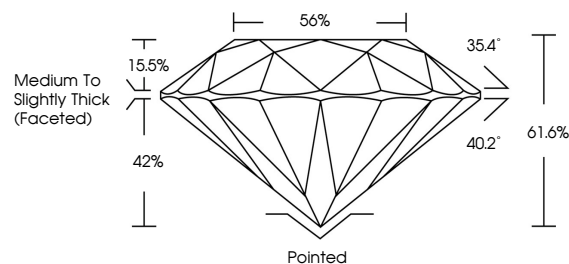
**GRADING RESULTS**

Carat Weight 1.00 CARAT  
Color Grade I  
Clarity Grade SI 2  
Cut Grade EXCELLENT

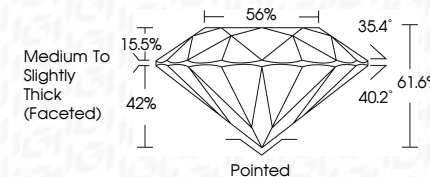
**ADDITIONAL GRADING INFORMATION**

Polish EXCELLENT  
Symmetry EXCELLENT  
Fluorescence NONE  
Inscription(s) IGI 54128808  
Comments: IDEAL CUT ROUND BRILLIANT

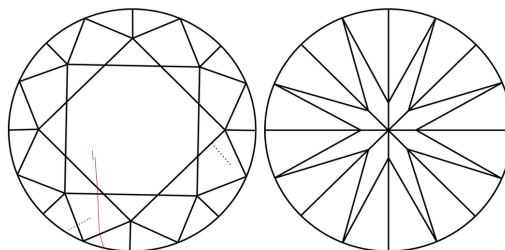
**PROPORTIONS**



Sample Image Used



**CLARITY CHARACTERISTICS**



**KEY TO SYMBOLS**

Red symbols indicate internal characteristics.  
Green symbols indicate external characteristics.

**COLOR**

D - F	G - J	K - M	N - R	S - Z	FANCY
Colorless	Near Colorless	Slightly Tinted	Very Light Color	Light Color	

**CLARITY**

IF	VS <sup>1-2</sup>	VS <sup>1-2</sup>	SI <sup>1-2</sup>	I <sup>1-3</sup>
Internally Flawless	Very Very Slightly Included	Very Slightly Included	Slightly Included	Included

**ADDITIONAL GRADING INFORMATION**

Polish EXCELLENT  
Symmetry EXCELLENT  
Fluorescence NONE  
Inscription(s) IGI 54128808  
Comments: IDEAL CUT ROUND BRILLIANT



**IGI**

October 19, 2022  
IGI Report No 54128808  
NATURAL DIAMOND  
ROUND BRILLIANT  
6.36 - 6.40 x 3.93 mm  
Carat Weight 1.00 CARAT  
Color Grade SI 2  
Clarity Grade EXCELLENT  
Cut Grade EXCELLENT  
Depth 61.6%  
Table 56%  
Girdle Medium To Slightly Thick (Faceted)  
Culet Pointed  
Polish EXCELLENT  
Symmetry EXCELLENT  
Fluorescence NONE  
Inscription(s) IGI 54128808  
Comments: IDEAL CUT ROUND BRILLIANT