



54128820

**DIAMOND REPORT**

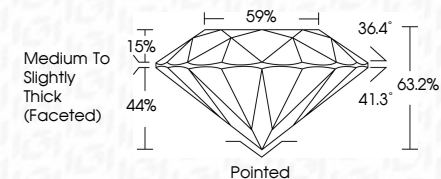
**ELECTRONIC COPY**



October 19, 2022  
IGI Report Number 54128820  
Description NATURAL DIAMOND  
Shape and Cutting Style ROUND BRILLIANT  
Measurements 7.08 - 7.11 x 4.48 mm

**GRADING RESULTS**

Carat Weight 1.41 CARAT  
Color Grade K  
Clarity Grade SI 1  
Cut Grade EXCELLENT



October 19, 2022  
IGI Report Number 54128820  
Description NATURAL DIAMOND  
Shape and Cutting Style ROUND BRILLIANT  
Measurements 7.08 - 7.11 x 4.48 mm

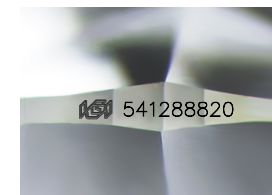
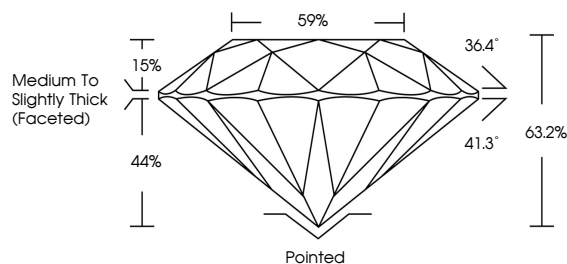
**GRADING RESULTS**

Carat Weight 1.41 CARAT  
Color Grade K  
Clarity Grade SI 1  
Cut Grade EXCELLENT

**ADDITIONAL GRADING INFORMATION**

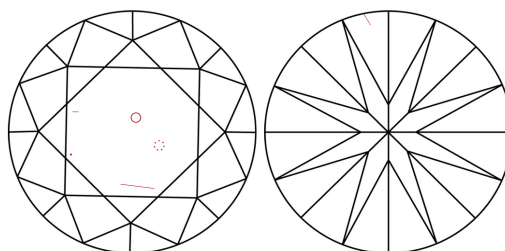
Polish EXCELLENT  
Symmetry EXCELLENT  
Fluorescence NONE  
Inscription(s) IGI 54128820

**PROPORTIONS**



Sample Image Used

**CLARITY CHARACTERISTICS**



**KEY TO SYMBOLS**

Red symbols indicate internal characteristics.  
Green symbols indicate external characteristics.

**COLOR**

D - F	G - J	K - M	N - R	S - Z	FANCY
Colorless	Near Colorless	Slightly Tinted	Very Light Color	Light Color	

**CLARITY**

IF	VS <sup>1-2</sup>	VS <sup>1-2</sup>	SI <sup>1-2</sup>	I <sup>1-3</sup>
Internally Flawless	Very Very Slightly Included	Very Slightly Included	Slightly Included	Included

**ADDITIONAL GRADING INFORMATION**

Polish EXCELLENT  
Symmetry EXCELLENT  
Fluorescence NONE  
Inscription(s) IGI 54128820



**IGI**

October 19, 2022  
IGI Report No 54128820  
NATURAL DIAMOND  
ROUND BRILLIANT  
7.08 - 7.11 x 4.48 mm  
Carat Weight 1.41 CARAT  
Color Grade K  
Clarity Grade SI 1  
Cut Grade EXCELLENT  
Depth 63.2%  
Table 59%  
Girdle Grade Medium To Slightly Thick (Faceted)  
Culet Pointed  
Polish EXCELLENT  
Symmetry EXCELLENT  
Fluorescence NONE  
Inscription(s) IGI 54128820

