



541288951

DIAMOND REPORT **ELECTRONIC COPY**



November 15, 2022
IGI Report Number 541288951
Description NATURAL DIAMOND
Shape and Cutting Style ROUND BRILLIANT
Measurements 6.32 - 6.37 x 4.02 mm

GRADING RESULTS

Carat Weight 1.00 CARAT
Color Grade H
Clarity Grade SI 2
Cut Grade EXCELLENT

November 15, 2022
IGI Report Number 541288951
Description NATURAL DIAMOND
Shape and Cutting Style ROUND BRILLIANT
Measurements 6.32 - 6.37 x 4.02 mm

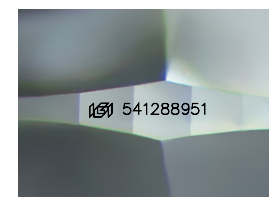
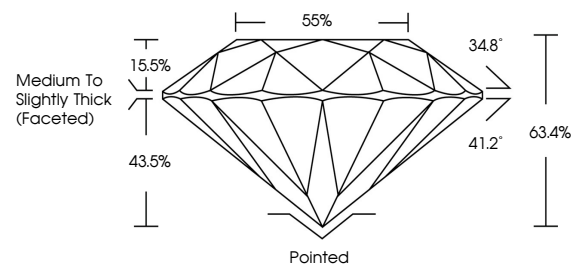
GRADING RESULTS

Carat Weight 1.00 CARAT
Color Grade H
Clarity Grade SI 2
Cut Grade EXCELLENT

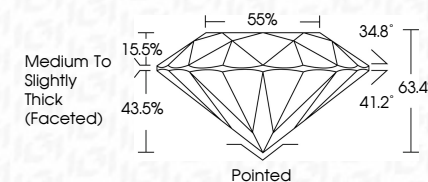
ADDITIONAL GRADING INFORMATION

Polish VERY GOOD
Symmetry VERY GOOD
Fluorescence SLIGHT
Inscription(s) 541288951

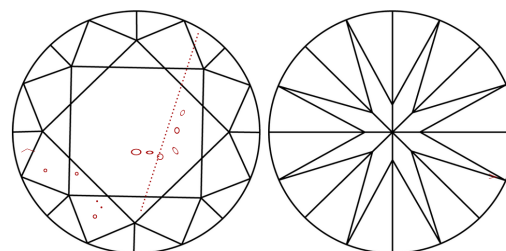
PROPORTIONS



Sample Image Used



CLARITY CHARACTERISTICS



KEY TO SYMBOLS

Red symbols indicate internal characteristics.
Green symbols indicate external characteristics.

COLOR

D - F	G - J	K - M	N - R	S - Z	FANCY
Colorless	Near Colorless	Slightly Tinted	Very Light Color	Light Color	

CLARITY

IF	VS ¹⁻²	VS ¹⁻²	SI ¹⁻²	I ¹⁻³
Internally Flawless	Very Very Slightly Included	Very Slightly Included	Slightly Included	Included

ADDITIONAL GRADING INFORMATION

Polish VERY GOOD
Symmetry VERY GOOD
Fluorescence SLIGHT
Inscription(s) 541288951



IGI

November 15, 2022
IGI Report No 541288951
NATURAL DIAMOND
ROUND BRILLIANT
6.32 - 6.37 x 4.02 mm
Carat Weight 1.00 CARAT
Color Grade H
Clarity Grade SI 2
Cut Grade EXCELLENT
Depth 63.4%
Table 15.5%
Girdle Medium To Slightly Thick (Faceted)
Culet Pointed
Polish VERY GOOD
Symmetry VERY GOOD
Fluorescence SLIGHT
Inscriptions(s) 541288951