



541288955

DIAMOND REPORT **ELECTRONIC COPY**

November 17, 2022
 IGI Report Number 541288955
 Description NATURAL DIAMOND
 Shape and Cutting Style ROUND BRILLIANT
 Measurements 6.75 - 6.79 x 4.22 mm

GRADING RESULTS

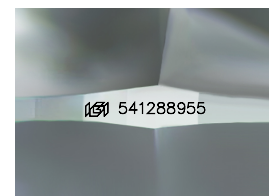
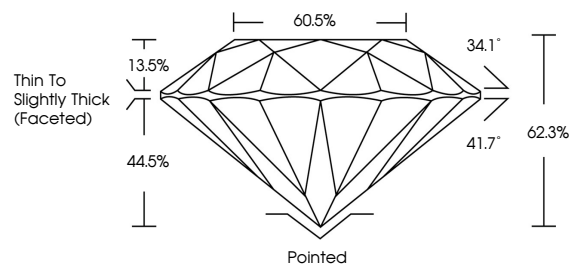
Carat Weight 1.20 CARAT
 Color Grade G
 Clarity Grade VVS 2
 Cut Grade EXCELLENT

ADDITIONAL GRADING INFORMATION

Polish EXCELLENT
 Symmetry EXCELLENT
 Fluorescence NONE
 Inscription(s) 541288955



PROPORTIONS



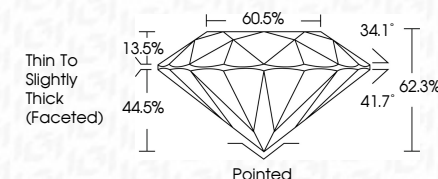
Sample Image Used



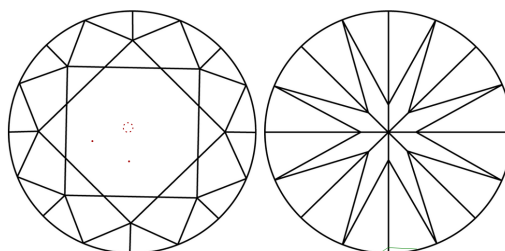
November 17, 2022
 IGI Report Number 541288955
 Description NATURAL DIAMOND
 Shape and Cutting Style ROUND BRILLIANT
 Measurements 6.75 - 6.79 x 4.22 mm

GRADING RESULTS

Carat Weight 1.20 CARAT
 Color Grade G
 Clarity Grade VVS 2
 Cut Grade EXCELLENT



CLARITY CHARACTERISTICS



KEY TO SYMBOLS

Red symbols indicate internal characteristics.
 Green symbols indicate external characteristics.

COLOR

D - F	G - J	K - M	N - R	S - Z	FANCY
Colorless	Near Colorless	Slightly Tinted	Very Light Color	Light Color	

CLARITY

IF	VS ¹⁻²	VS ¹⁻²	SI ¹⁻²	I ¹⁻³
Internally Flawless	Very Very Slightly Included	Very Slightly Included	Slightly Included	Included

ADDITIONAL GRADING INFORMATION

Polish EXCELLENT
 Symmetry EXCELLENT
 Fluorescence NONE
 Inscription(s) 541288955



IGI

November 17, 2022
 IGI Report No 541288955
 NATURAL DIAMOND
 ROUND BRILLIANT
 6.75 - 6.79 x 4.22 mm
 Carat Weight 1.20 CARAT
 Color Grade G
 Clarity Grade VVS2
 Cut Grade EXCELLENT
 Depth 62.3%
 Table 60.5%
 Girdle Thin To Slightly Thick (Faceted)
 Culet Pointed
 Polish EXCELLENT
 Symmetry EXCELLENT
 Fluorescence NONE
 Inscription(s) 541288955