



541288948

**DIAMOND REPORT**

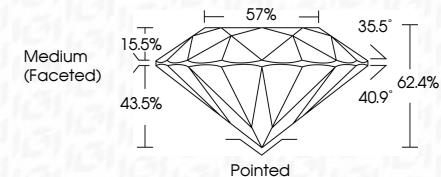
**ELECTRONIC COPY**



November 11, 2022  
IGI Report Number 541288948  
Description NATURAL DIAMOND  
Shape and Cutting Style ROUND BRILLIANT  
Measurements 8.23 - 8.27 x 5.15 mm

**GRADING RESULTS**

Carat Weight 2.16 CARATS  
Color Grade H  
Clarity Grade VVS 2  
Cut Grade EXCELLENT



November 11, 2022  
IGI Report Number 541288948  
Description NATURAL DIAMOND  
Shape and Cutting Style ROUND BRILLIANT  
Measurements 8.23 - 8.27 x 5.15 mm

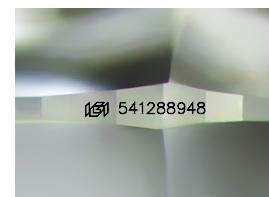
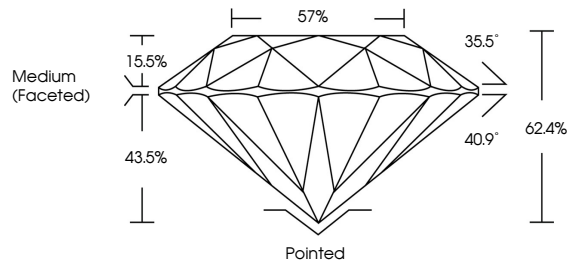
**GRADING RESULTS**

Carat Weight 2.16 CARATS  
Color Grade H  
Clarity Grade VVS 2  
Cut Grade EXCELLENT

**ADDITIONAL GRADING INFORMATION**

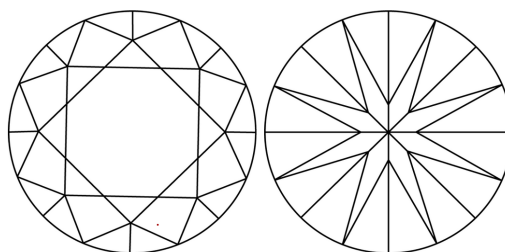
Polish EXCELLENT  
Symmetry EXCELLENT  
Fluorescence NONE  
Inscription(s) 541288948  
Comments: IDEAL CUT ROUND BRILLIANT

**PROPORTIONS**



Sample Image Used

**CLARITY CHARACTERISTICS**



**KEY TO SYMBOLS**

Red symbols indicate internal characteristics.  
Green symbols indicate external characteristics.

**COLOR**

D - F	G - J	K - M	N - R	S - Z	FANCY
Colorless	Near Colorless	Slightly Tinted	Very Light Color	Light Color	

**CLARITY**

IF	VS <sup>1-2</sup>	VS <sup>1-2</sup>	SI <sup>1-2</sup>	I <sup>1-3</sup>
Internally Flawless	Very Very Slightly Included	Very Slightly Included	Slightly Included	Included

**ADDITIONAL GRADING INFORMATION**

Polish EXCELLENT  
Symmetry EXCELLENT  
Fluorescence NONE  
Inscription(s) 541288948  
Comments: IDEAL CUT ROUND BRILLIANT



**IGI**



November 11, 2022  
IGI Report No 541288948  
NATURAL DIAMOND  
ROUND BRILLIANT  
8.23 - 8.27 x 5.15 mm  
Carat Weight 2.16 CARATS  
Color Grade H  
Clarity Grade VVS2  
Cut Grade EXCELLENT  
Depth 62.4%  
Table 57%  
Grade Medium (Faceted)  
Cut Pointed  
Polish EXCELLENT  
Symmetry EXCELLENT  
Fluorescence NONE  
Inscription(s) 541288948  
Comments: IDEAL CUT ROUND BRILLIANT