



541288956

**DIAMOND REPORT** **ELECTRONIC COPY**



November 17, 2022  
IGI Report Number 541288956  
Description NATURAL DIAMOND  
Shape and Cutting Style ROUND BRILLIANT  
Measurements 8.57 - 8.64 x 5.45 mm

**GRADING RESULTS**

Carat Weight 2.50 CARATS  
Color Grade H  
Clarity Grade SI 1  
Cut Grade EXCELLENT

November 17, 2022  
IGI Report Number 541288956  
Description NATURAL DIAMOND  
Shape and Cutting Style ROUND BRILLIANT  
Measurements 8.57 - 8.64 x 5.45 mm

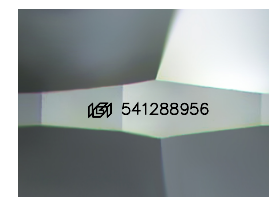
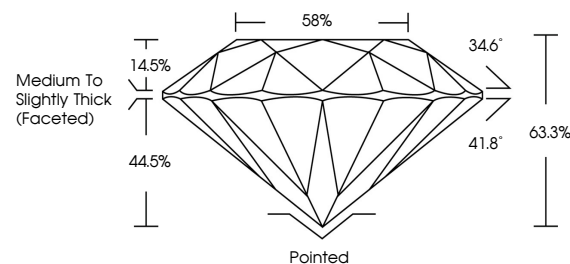
**GRADING RESULTS**

Carat Weight 2.50 CARATS  
Color Grade H  
Clarity Grade SI 1  
Cut Grade EXCELLENT

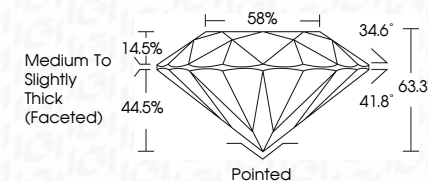
**ADDITIONAL GRADING INFORMATION**

Polish EXCELLENT  
Symmetry EXCELLENT  
Fluorescence NONE  
Inscription(s) 541288956

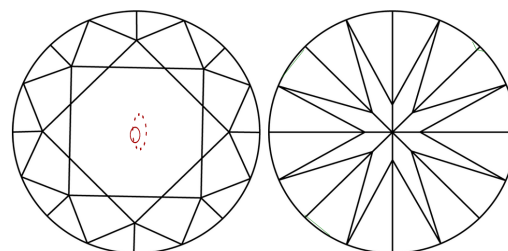
**PROPORTIONS**



Sample Image Used



**CLARITY CHARACTERISTICS**



**KEY TO SYMBOLS**

Red symbols indicate internal characteristics.  
Green symbols indicate external characteristics.

**COLOR**

D - F	G - J	K - M	N - R	S - Z	FANCY
Colorless	Near Colorless	Slightly Tinted	Very Light Color	Light Color	

**CLARITY**

IF	VS 1-2	VS 1-2	SI 1-2	I 1-3
Internally Flawless	Very Very Slightly Included	Very Slightly Included	Slightly Included	Included

**ADDITIONAL GRADING INFORMATION**

Polish EXCELLENT  
Symmetry EXCELLENT  
Fluorescence NONE  
Inscription(s) 541288956



**IGI**

November 17, 2022  
IGI Report No 541288956  
NATURAL DIAMOND  
ROUND BRILLIANT  
8.57 - 8.64 x 5.45 mm  
Carat Weight 2.50 CARATS  
Color Grade H  
Clarity Grade SI 1  
Cut Grade EXCELLENT  
Depth 63.3%  
Table 58%  
Girdle Grade Medium To Slightly Thick (Faceted)  
Culet Pointed  
Polish EXCELLENT  
Symmetry EXCELLENT  
Fluorescence NONE  
Inscriptions(s) 541288956

