



541289044

DIAMOND REPORT ELECTRONIC COPY



December 7, 2022
IGI Report Number 541289044
Description NATURAL DIAMOND
Shape and Cutting Style ROUND BRILLIANT
Measurements 8.03 - 8.09 x 4.96 mm

GRADING RESULTS

Carat Weight 2.01 CARATS
Color Grade J
Clarity Grade SI 1
Cut Grade EXCELLENT

December 7, 2022
IGI Report Number 541289044
Description NATURAL DIAMOND
Shape and Cutting Style ROUND BRILLIANT
Measurements 8.03 - 8.09 x 4.96 mm

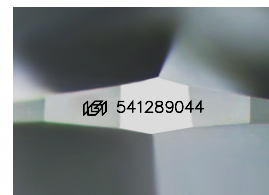
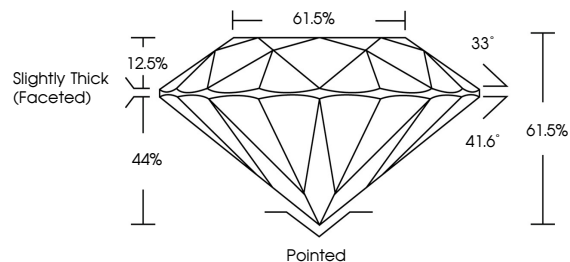
GRADING RESULTS

Carat Weight 2.01 CARATS
Color Grade J
Clarity Grade SI 1
Cut Grade EXCELLENT

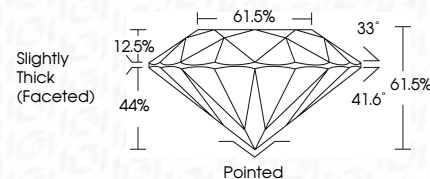
ADDITIONAL GRADING INFORMATION

Polish EXCELLENT
Symmetry EXCELLENT
Fluorescence NONE
Inscription(s) IGI 541289044

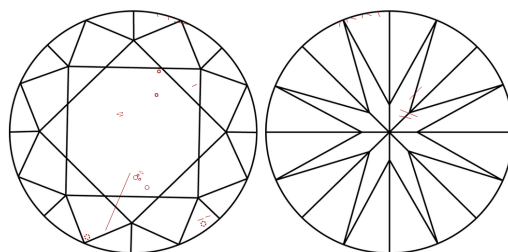
PROPORTIONS



Sample Image Used



CLARITY CHARACTERISTICS



KEY TO SYMBOLS

Red symbols indicate internal characteristics.
Green symbols indicate external characteristics.

COLOR

Table with columns D-F, G-J, K-M, N-R, S-Z, FANCY and rows Colorless, Near Colorless, Slightly Tinted, Very Light Color, Light Color

CLARITY

Table with columns IF, VS 1-2, VS 1-2, SI 1-2, I 1-3 and rows Internally Flawless, Very Very Slightly Included, Very Slightly Included, Slightly Included, Included

ADDITIONAL GRADING INFORMATION

Polish EXCELLENT
Symmetry EXCELLENT
Fluorescence NONE
Inscription(s) IGI 541289044



IGI

December 7, 2022
IGI Report No 541289044
NATURAL DIAMOND
ROUND BRILLIANT
8.03 - 8.09 x 4.96 mm
Carat Weight 2.01 CARATS
Color Grade J
Clarity Grade SI 1
Cut Grade EXCELLENT
Depth 61.5%
Table Grade Slightly Thick (Faceted)
Culet Pointed
Polish EXCELLENT
Symmetry EXCELLENT
Fluorescence NONE
Inscription(s) IGI 541289044