



541289041

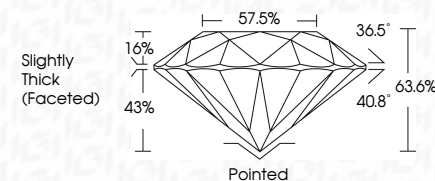
DIAMOND REPORT **ELECTRONIC COPY**



December 8, 2022
IGI Report Number 541289041
Description NATURAL DIAMOND
Shape and Cutting Style ROUND BRILLIANT
Measurements 7.89 - 7.94 x 5.03 mm

GRADING RESULTS

Carat Weight 2.00 CARATS
Color Grade G
Clarity Grade SI 1
Cut Grade EXCELLENT



December 8, 2022
IGI Report Number 541289041
Description NATURAL DIAMOND
Shape and Cutting Style ROUND BRILLIANT
Measurements 7.89 - 7.94 x 5.03 mm

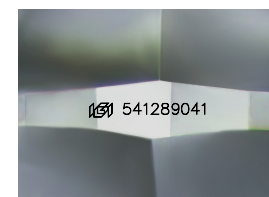
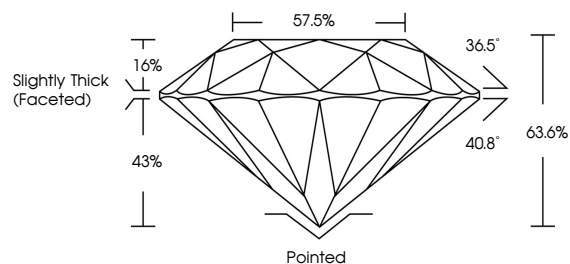
GRADING RESULTS

Carat Weight 2.00 CARATS
Color Grade G
Clarity Grade SI 1
Cut Grade EXCELLENT

ADDITIONAL GRADING INFORMATION

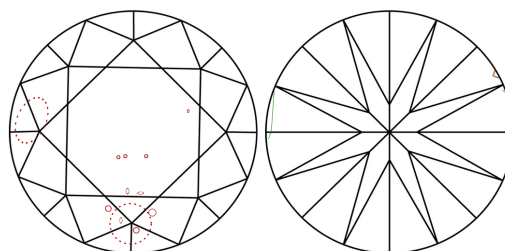
Polish EXCELLENT
Symmetry EXCELLENT
Fluorescence NONE
Inscription(s) IGI 541289041

PROPORTIONS



Sample Image Used

CLARITY CHARACTERISTICS



KEY TO SYMBOLS

Red symbols indicate internal characteristics.
Green symbols indicate external characteristics.

COLOR

D - F	G - J	K - M	N - R	S - Z	FANCY
Colorless	Near Colorless	Slightly Tinted	Very Light Color	Light Color	

CLARITY

IF	VS 1-2	VS 1-2	SI 1-2	I 1-3
Internally Flawless	Very Very Slightly Included	Very Slightly Included	Slightly Included	Included

ADDITIONAL GRADING INFORMATION

Polish EXCELLENT
Symmetry EXCELLENT
Fluorescence NONE
Inscription(s) IGI 541289041



IGI



December 8, 2022
IGI Report No 541289041
NATURAL DIAMOND
ROUND BRILLIANT
7.89 - 7.94 x 5.03 mm
Carat Weight 2.00 CARATS
Color Grade G
Clarity Grade SI 1
Cut Grade EXCELLENT
Depth 63.6%
Table 57.5%
Grade Slightly Thick (Faceted)
Culet Pointed
Polish EXCELLENT
Symmetry EXCELLENT
Fluorescence NONE
Inscription(s) IGI 541289041