



541289031

DIAMOND REPORT

ELECTRONIC COPY



December 1, 2022
IGI Report Number 541289031
Description NATURAL DIAMOND
Shape and Cutting Style ROUND BRILLIANT
Measurements 8.04 - 8.10 x 4.95 mm

GRADING RESULTS

Carat Weight 2.00 CARATS
Color Grade I
Clarity Grade SI 2
Cut Grade EXCELLENT

December 1, 2022
IGI Report Number 541289031
Description NATURAL DIAMOND
Shape and Cutting Style ROUND BRILLIANT
Measurements 8.04 - 8.10 x 4.95 mm

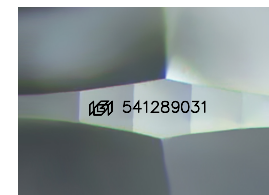
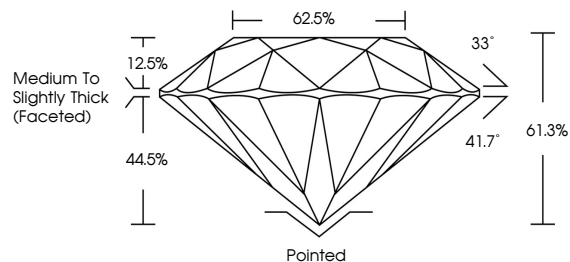
GRADING RESULTS

Carat Weight 2.00 CARATS
Color Grade I
Clarity Grade SI 2
Cut Grade EXCELLENT

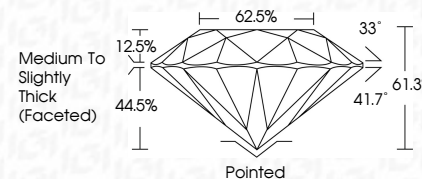
ADDITIONAL GRADING INFORMATION

Polish EXCELLENT
Symmetry EXCELLENT
Fluorescence NONE
Inscription(s) IGI 541289031

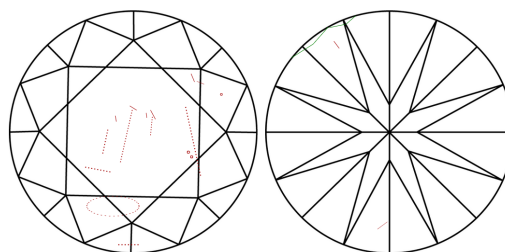
PROPORTIONS



Sample Image Used



CLARITY CHARACTERISTICS



KEY TO SYMBOLS

Red symbols indicate internal characteristics.
Green symbols indicate external characteristics.

COLOR

D - F	G - J	K - M	N - R	S - Z	FANCY
Colorless	Near Colorless	Slightly Tinted	Very Light Color	Light Color	

CLARITY

IF	VS 1-2	VS 1-2	SI 1-2	I 1-3
Internally Flawless	Very Very Slightly Included	Very Slightly Included	Slightly Included	Included

ADDITIONAL GRADING INFORMATION

Polish EXCELLENT
Symmetry EXCELLENT
Fluorescence NONE
Inscription(s) IGI 541289031



IGI

December 1, 2022
IGI Report No 541289031
NATURAL DIAMOND
ROUND BRILLIANT
8.04 - 8.10 x 4.95 mm
Carat Weight 2.00 CARATS
Color Grade SI 2
Clarity Grade EXCELLENT
Cut Grade EXCELLENT
Depth 61.3%
Table 62.5%
Girdle Grade Medium To Slightly Thick (Faceted)
Culet Pointed
Polish EXCELLENT
Symmetry EXCELLENT
Fluorescence NONE
Inscription(s) IGI 541289031

