



541289057

DIAMOND REPORT **ELECTRONIC COPY**



December 9, 2022
 IGI Report Number 541289057
 Description NATURAL DIAMOND
 Shape and Cutting Style ROUND BRILLIANT
 Measurements 7.55 - 7.59 x 4.54 mm

GRADING RESULTS

Carat Weight 1.60 CARAT
 Color Grade H
 Clarity Grade VVS 2
 Cut Grade EXCELLENT

December 9, 2022
 IGI Report Number 541289057
 Description NATURAL DIAMOND
 Shape and Cutting Style ROUND BRILLIANT
 Measurements 7.55 - 7.59 x 4.54 mm

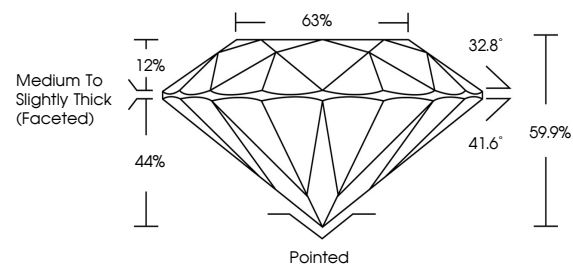
GRADING RESULTS

Carat Weight 1.60 CARAT
 Color Grade H
 Clarity Grade VVS 2
 Cut Grade EXCELLENT

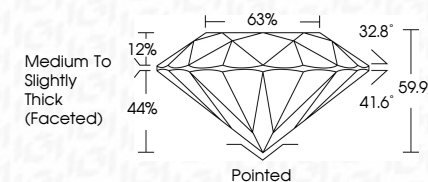
ADDITIONAL GRADING INFORMATION

Polish EXCELLENT
 Symmetry EXCELLENT
 Fluorescence NONE
 Inscription(s) 541289057

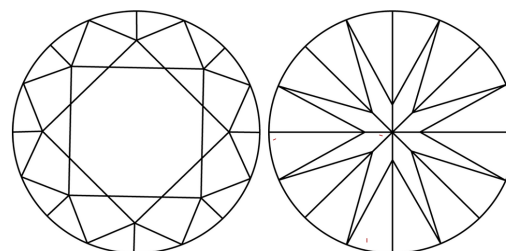
PROPORTIONS



Sample Image Used



CLARITY CHARACTERISTICS



KEY TO SYMBOLS

Red symbols indicate internal characteristics.
 Green symbols indicate external characteristics.

COLOR

D - F	G - J	K - M	N - R	S - Z	FANCY
Colorless	Near Colorless	Slightly Tinted	Very Light Color	Light Color	

CLARITY

IF	VVS ¹⁻²	VS ¹⁻²	SI ¹⁻²	I ¹⁻³
Internally Flawless	Very Very Slightly Included	Very Slightly Included	Slightly Included	Included

ADDITIONAL GRADING INFORMATION

Polish EXCELLENT
 Symmetry EXCELLENT
 Fluorescence NONE
 Inscription(s) 541289057



IGI

December 9, 2022
 IGI Report No 541289057
 NATURAL DIAMOND
 ROUND BRILLIANT
 7.55 - 7.59 x 4.54 mm
 Carat Weight 1.60 CARAT
 Color Grade H
 Clarity Grade VVS2
 Cut Grade EXCELLENT
 Depth 59.9%
 Table 63%
 Grade Medium To Slightly Thick (Faceted)
 Culet Pointed
 Polish EXCELLENT
 Symmetry EXCELLENT
 Fluorescence NONE
 Inscription(s) 541289057

