



541289056

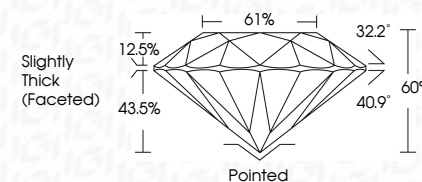
**DIAMOND REPORT** **ELECTRONIC COPY**



December 8, 2022  
IGI Report Number 541289056  
Description NATURAL DIAMOND  
Shape and Cutting Style ROUND BRILLIANT  
Measurements 8.75 - 8.80 x 5.27 mm

**GRADING RESULTS**

Carat Weight 2.52 CARATS  
Color Grade J  
Clarity Grade SI 1  
Cut Grade EXCELLENT



December 8, 2022  
IGI Report Number 541289056  
Description NATURAL DIAMOND  
Shape and Cutting Style ROUND BRILLIANT  
Measurements 8.75 - 8.80 x 5.27 mm

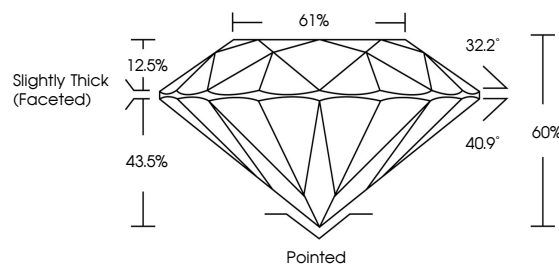
**GRADING RESULTS**

Carat Weight 2.52 CARATS  
Color Grade J  
Clarity Grade SI 1  
Cut Grade EXCELLENT

**ADDITIONAL GRADING INFORMATION**

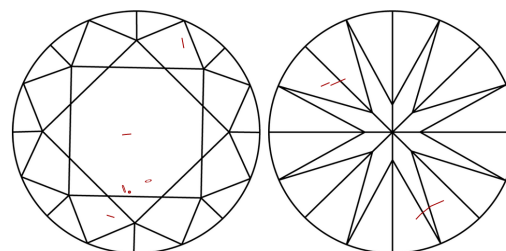
Polish EXCELLENT  
Symmetry EXCELLENT  
Fluorescence NONE  
Inscription(s) IGI 541289056

**PROPORTIONS**



Sample Image Used

**CLARITY CHARACTERISTICS**



**KEY TO SYMBOLS**

Red symbols indicate internal characteristics.  
Green symbols indicate external characteristics.

**COLOR**

D - F	G - J	K - M	N - R	S - Z	FANCY
Colorless	Near Colorless	Slightly Tinted	Very Light Color	Light Color	

**CLARITY**

IF	VS 1-2	VS 1-2	SI 1-2	I 1-3
Internally Flawless	Very Very Slightly Included	Very Slightly Included	Slightly Included	Included

**ADDITIONAL GRADING INFORMATION**

Polish EXCELLENT  
Symmetry EXCELLENT  
Fluorescence NONE  
Inscription(s) IGI 541289056



**IGI**



December 8, 2022  
IGI Report No 541289056  
NATURAL DIAMOND  
ROUND BRILLIANT  
8.75 - 8.80 x 5.27 mm  
Carat Weight 2.52 CARATS  
Color Grade J  
Clarity Grade SI 1  
Cut Grade EXCELLENT  
Depth 60%  
Table Grade Slightly Thick (Faceted)  
Culet Pointed  
Polish EXCELLENT  
Symmetry EXCELLENT  
Fluorescence NONE  
Inscription(s) IGI 541289056