



555277405

DIAMOND REPORT

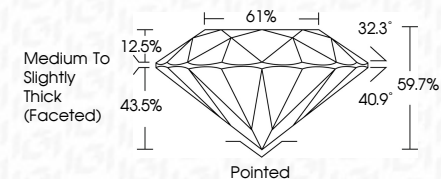
ELECTRONIC COPY



December 29, 2022
IGI Report Number 555277405
Description NATURAL DIAMOND
Shape and Cutting Style ROUND BRILLIANT
Measurements 6.45 - 6.52 x 3.88 mm

GRADING RESULTS

Carat Weight 1.01 CARAT
Color Grade J
Clarity Grade VVS 1
Cut Grade EXCELLENT



December 29, 2022
IGI Report Number 555277405
Description NATURAL DIAMOND
Shape and Cutting Style ROUND BRILLIANT
Measurements 6.45 - 6.52 x 3.88 mm

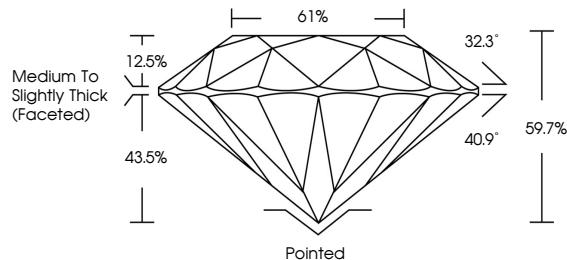
GRADING RESULTS

Carat Weight 1.01 CARAT
Color Grade J
Clarity Grade VVS 1
Cut Grade EXCELLENT

ADDITIONAL GRADING INFORMATION

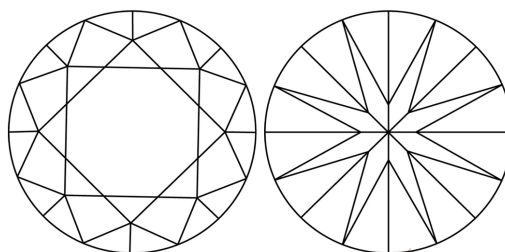
Polish EXCELLENT
Symmetry EXCELLENT
Fluorescence VERY SLIGHT
Inscription(s) 555277405

PROPORTIONS



Sample Image Used

CLARITY CHARACTERISTICS



KEY TO SYMBOLS

Red symbols indicate internal characteristics.
Green symbols indicate external characteristics.

COLOR

D - F	G - J	K - M	N - R	S - Z	FANCY
Colorless	Near Colorless	Slightly Tinted	Very Light Color	Light Color	

CLARITY

IF	VS ¹⁻²	VS ¹⁻²	SI ¹⁻²	I ¹⁻³
Internally Flawless	Very Very Slightly Included	Very Slightly Included	Slightly Included	Included

ADDITIONAL GRADING INFORMATION

Polish EXCELLENT
Symmetry EXCELLENT
Fluorescence VERY SLIGHT
Inscription(s) 555277405



IGI



December 29, 2022
IGI Report No 555277405
NATURAL DIAMOND
ROUND BRILLIANT
6.45 - 6.52 x 3.88 mm
Carat Weight 1.01 CARAT
Color Grade J
Clarity Grade VVS 1
Cut Grade EXCELLENT
Depth 59.7%
Table 61%
Girdle Medium To Slightly Thick (Faceted)
Culet Pointed
Polish EXCELLENT
Symmetry EXCELLENT
Fluorescence VERY SLIGHT
Inscription(s) 555277405