



555277451

**DIAMOND REPORT**

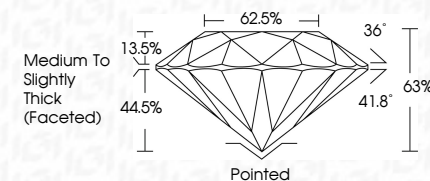
**ELECTRONIC COPY**



January 6, 2023  
IGI Report Number 555277451  
Description NATURAL DIAMOND  
Shape and Cutting Style ROUND BRILLIANT  
Measurements 8.19 - 8.23 x 5.17 mm

**GRADING RESULTS**

Carat Weight 2.20 CARATS  
Color Grade K  
Clarity Grade VS 2  
Cut Grade EXCELLENT



January 6, 2023  
IGI Report Number 555277451  
Description NATURAL DIAMOND  
Shape and Cutting Style ROUND BRILLIANT  
Measurements 8.19 - 8.23 x 5.17 mm

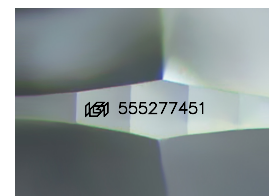
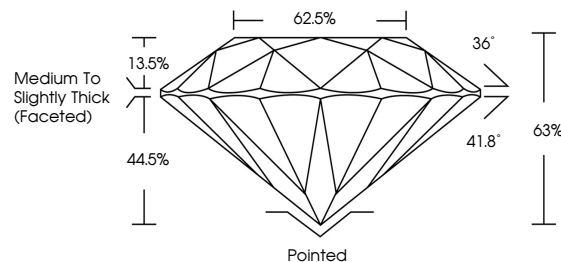
**GRADING RESULTS**

Carat Weight 2.20 CARATS  
Color Grade K  
Clarity Grade VS 2  
Cut Grade EXCELLENT

**ADDITIONAL GRADING INFORMATION**

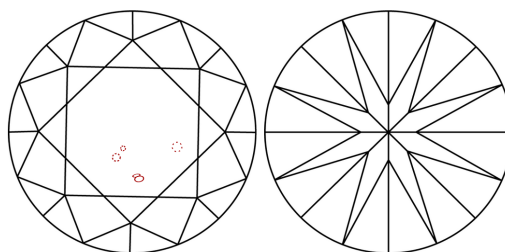
Polish EXCELLENT  
Symmetry EXCELLENT  
Fluorescence NONE  
Inscription(s) IGI 555277451

**PROPORTIONS**



Sample Image Used

**CLARITY CHARACTERISTICS**



**KEY TO SYMBOLS**

Red symbols indicate internal characteristics.  
Green symbols indicate external characteristics.

**COLOR**

D - F	G - J	K - M	N - R	S - Z	FANCY
Colorless	Near Colorless	Slightly Tinted	Very Light Color	Light Color	

**CLARITY**

IF	VS <sup>1-2</sup>	VS <sup>1-2</sup>	SI <sup>1-2</sup>	I <sup>1-3</sup>
Internally Flawless	Very Very Slightly Included	Very Slightly Included	Slightly Included	Included

**ADDITIONAL GRADING INFORMATION**

Polish EXCELLENT  
Symmetry EXCELLENT  
Fluorescence NONE  
Inscription(s) IGI 555277451



**IGI**



January 6, 2023  
IGI Report No 555277451  
NATURAL DIAMOND  
ROUND BRILLIANT  
8.19 - 8.23 x 5.17 mm  
Carat Weight 2.20 CARATS  
Color Grade K  
Clarity Grade VS2  
Cut Grade EXCELLENT  
Depth 63%  
Table 62.5%  
Girdle Medium To Slightly Thick (Faceted)  
Culet Pointed  
Polish EXCELLENT  
Symmetry EXCELLENT  
Fluorescence NONE  
Inscription(s) IGI 555277451