



483187022

**DIAMOND REPORT**

**ELECTRONIC COPY**

October 11, 2021  
 IGI Report Number 483187022  
 Description NATURAL DIAMOND  
 Shape and Cutting Style ROUND BRILLIANT  
 Measurements 6.48 - 6.52 x 3.82 mm

**GRADING RESULTS**

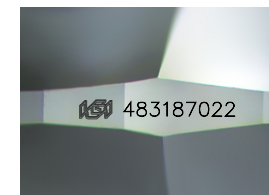
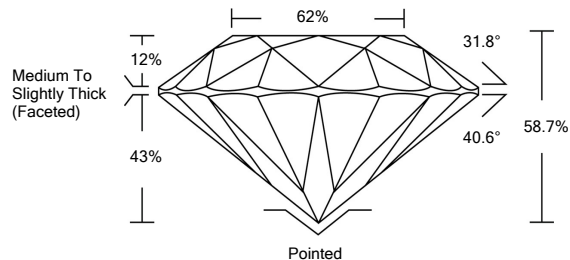
Carat Weight 1.00 CARAT  
 Color Grade G  
 Clarity Grade VS 2  
 Cut Grade EXCELLENT

**ADDITIONAL GRADING INFORMATION**

Polish EXCELLENT  
 Symmetry EXCELLENT  
 Fluorescence NONE  
 Inscription(s) IGI 483187022



**PROPORTIONS**



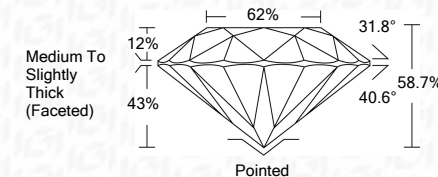
Sample Image Used



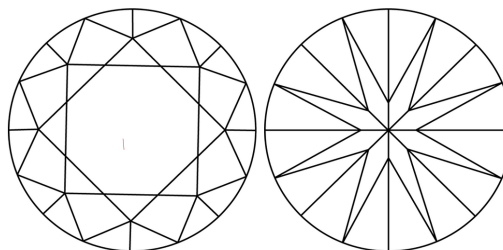
October 11, 2021  
 IGI Report Number 483187022  
 Description NATURAL DIAMOND  
 Shape and Cutting Style ROUND BRILLIANT  
 Measurements 6.48 - 6.52 x 3.82 mm

**GRADING RESULTS**

Carat Weight 1.00 CARAT  
 Color Grade G  
 Clarity Grade VS 2  
 Cut Grade EXCELLENT



**CLARITY CHARACTERISTICS**



**KEY TO SYMBOLS**

Red symbols indicate internal characteristics.  
 Green symbols indicate external characteristics.

**COLOR**

D - F	G - J	K - M	N - R	S - Z	FANCY
Colorless	Near Colorless	Slightly Tinted	Very Light Color	Light Color	

**CLARITY**

IF	VS <sup>1-2</sup>	VS <sup>1-2</sup>	SI <sup>1-2</sup>	I <sup>1-3</sup>
Internally Flawless	Very Very Slightly Included	Very Slightly Included	Slightly Included	Included

**ADDITIONAL GRADING INFORMATION**

Polish EXCELLENT  
 Symmetry EXCELLENT  
 Fluorescence NONE  
 Inscription(s) IGI 483187022



**IGI**

October 11, 2021  
 IGI Report No 483187022  
 NATURAL DIAMOND  
 ROUND BRILLIANT  
 6.48 - 6.52 x 3.82 mm  
 Carat Weight 1.00 CARAT  
 Color Grade G  
 Clarity Grade VS 2  
 Cut Grade EXCELLENT  
 Depth 58.7%  
 Table 62%  
 Girdle Medium To Slightly Thick (Faceted)  
 Culet Pointed  
 Polish EXCELLENT  
 Symmetry EXCELLENT  
 Fluorescence NONE  
 Inscription(s) IGI 483187022