



516264810

**DIAMOND REPORT** **ELECTRONIC COPY**

March 28, 2022  
 IGI Report Number 516264810  
 Description NATURAL DIAMOND  
 Shape and Cutting Style ROUND BRILLIANT  
 Measurements 7.00 - 7.03 x 4.23 mm

**GRADING RESULTS**

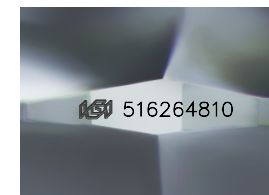
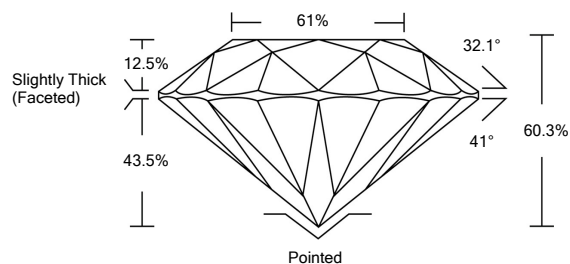
Carat Weight 1.30 CARAT  
 Color Grade K  
 Clarity Grade SI 1  
 Cut Grade EXCELLENT

**ADDITIONAL GRADING INFORMATION**

Polish EXCELLENT  
 Symmetry EXCELLENT  
 Fluorescence NONE  
 Inscription(s) IGI 516264810



**PROPORTIONS**



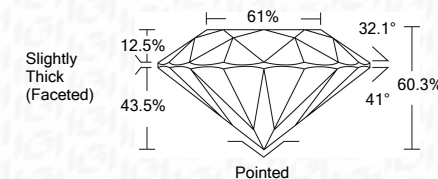
Sample Image Used



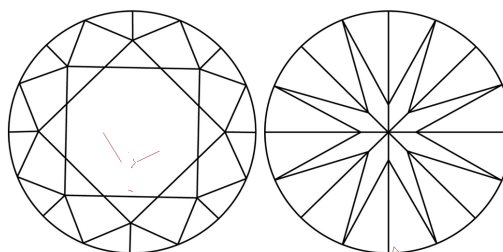
March 28, 2022  
 IGI Report Number 516264810  
 Description NATURAL DIAMOND  
 Shape and Cutting Style ROUND BRILLIANT  
 Measurements 7.00 - 7.03 x 4.23 mm

**GRADING RESULTS**

Carat Weight 1.30 CARAT  
 Color Grade K  
 Clarity Grade SI 1  
 Cut Grade EXCELLENT



**CLARITY CHARACTERISTICS**



**KEY TO SYMBOLS**

Red symbols indicate internal characteristics.  
 Green symbols indicate external characteristics.

**COLOR**

D - F	G - J	K - M	N - R	S - Z	FANCY
Colorless	Near Colorless	Slightly Tinted	Very Light Color	Light Color	

**CLARITY**

IF	VS <sup>1-2</sup>	VS <sup>1-2</sup>	SI <sup>1-2</sup>	I <sup>1-3</sup>
Internally Flawless	Very Very Slightly Included	Very Slightly Included	Slightly Included	Included

**ADDITIONAL GRADING INFORMATION**

Polish EXCELLENT  
 Symmetry EXCELLENT  
 Fluorescence NONE  
 Inscription(s) IGI 516264810



**IGI**

March 28, 2022  
 IGI Report No 516264810  
 NATURAL DIAMOND  
 ROUND BRILLIANT  
 7.00 - 7.03 x 4.23 mm  
 Carat Weight 1.30 CARAT  
 Color Grade K  
 Clarity Grade SI 1  
 Cut Grade EXCELLENT  
 Depth 60.3%  
 Table 61%  
 Girdle Slightly Thick (Faceted)  
 Culet Pointed  
 Polish EXCELLENT  
 Symmetry EXCELLENT  
 Fluorescence NONE  
 Inscription(s) IGI 516264810

