



516264546

DIAMOND REPORT **ELECTRONIC COPY**

May 18, 2022
 IGI Report Number 516264546
 Description NATURAL DIAMOND
 Shape and Cutting Style ROUND BRILLIANT
 Measurements 7.24 - 7.27 x 4.59 mm

GRADING RESULTS

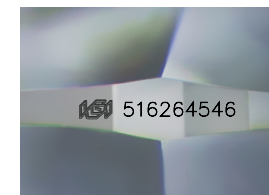
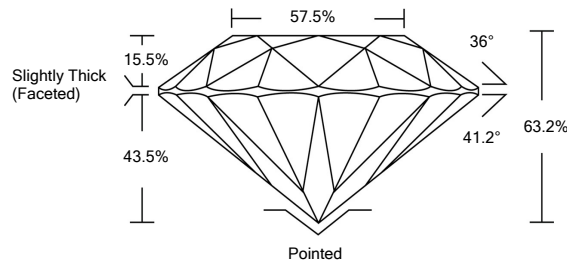
Carat Weight 1.51 CARAT
 Color Grade K
 Clarity Grade VS 2
 Cut Grade EXCELLENT

ADDITIONAL GRADING INFORMATION

Polish EXCELLENT
 Symmetry EXCELLENT
 Fluorescence NONE
 Inscription(s) IGI 516264546



PROPORTIONS



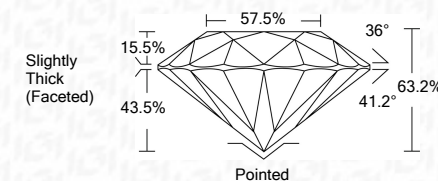
Sample Image Used



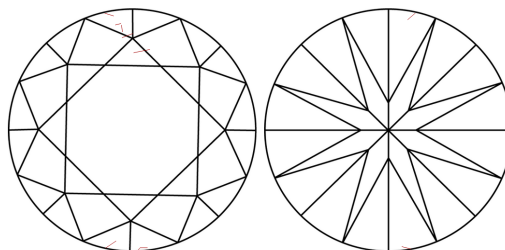
May 18, 2022
 IGI Report Number 516264546
 Description NATURAL DIAMOND
 Shape and Cutting Style ROUND BRILLIANT
 Measurements 7.24 - 7.27 x 4.59 mm

GRADING RESULTS

Carat Weight 1.51 CARAT
 Color Grade K
 Clarity Grade VS 2
 Cut Grade EXCELLENT



CLARITY CHARACTERISTICS



KEY TO SYMBOLS

Red symbols indicate internal characteristics.
 Green symbols indicate external characteristics.

COLOR

D - F	G - J	K - M	N - R	S - Z	FANCY
Colorless	Near Colorless	Slightly Tinted	Very Light Color	Light Color	

CLARITY

IF	VS ¹⁻²	VS ¹⁻²	SI ¹⁻²	I ¹⁻³
Internally Flawless	Very Very Slightly Included	Very Slightly Included	Slightly Included	Included

ADDITIONAL GRADING INFORMATION

Polish EXCELLENT
 Symmetry EXCELLENT
 Fluorescence NONE
 Inscription(s) IGI 516264546



IGI

May 18, 2022
 IGI Report No 516264546
 NATURAL DIAMOND
 ROUND BRILLIANT
 7.24 - 7.27 x 4.59 mm
 Carat Weight 1.51 CARAT
 Color Grade K
 Clarity Grade VS2
 Cut Grade EXCELLENT
 Depth 63.2%
 Table 57.5%
 Girdle Slightly Thick (faceted)
 Culet Pointed
 Polish EXCELLENT
 Symmetry EXCELLENT
 Fluorescence NONE
 Inscription(s) IGI 516264546