



ELECTRONIC COPY

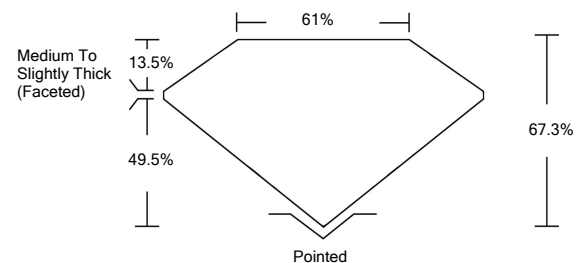
LABORATORY GROWN DIAMOND REPORT

| | |
|---------------------------------------|-------------------------------------|
| February 24, 2022 | |
| IGI Report Number | LG516240867 |
| Description | LABORATORY GROWN DIAMOND |
| Shape and Cutting Style | SQUARE CUSHION BRILLIANT |
| Measurements | 7.41 X 7.32 X 4.93 MM |
| GRADING RESULTS | |
| Carat Weight | 2.02 CARATS |
| Color Grade | E |
| Clarity Grade | VS 1 |
| ADDITIONAL GRADING INFORMATION | |
| Polish | EXCELLENT |
| Symmetry | EXCELLENT |
| Fluorescence | NONE |
| Inscription(s) | LABGROWN IGI LG516240867 |

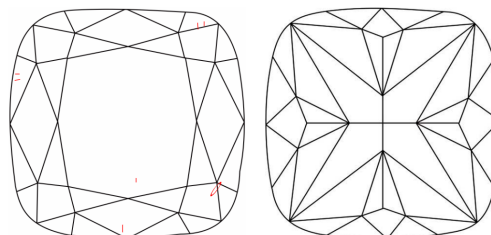
Comments: As Grown - No indication of post-growth treatment.
This Laboratory Grown Diamond was created by High Pressure High Temperature (HPHT) growth process. Type II

LG516240867

PROPORTIONS



CLARITY CHARACTERISTICS

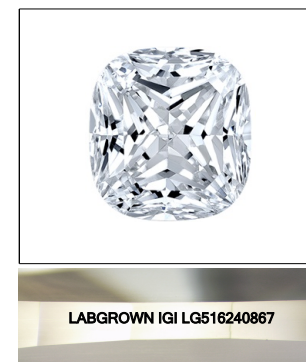


KEY TO SYMBOLS

Red symbols indicate internal characteristics.
Green symbols indicate external characteristics.

GRADING SCALES

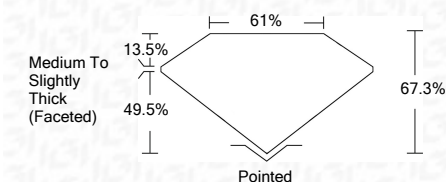
| | | | | | | |
|-----------------------------|------------------------------|-----------------------------|------------------------|-------------------|-----------|---|
| COLOR GRADING SCALE | CL | NC | FT | VLT | LT | |
| | COLORLESS D-F | NEAR COLORLESS G-J | FAINT K-M | VERY LIGHT N-R | LIGHT S-Z | |
| CLARITY (10x) GRADING SCALE | FL | IF | VVS | VS | SI | I |
| | FLAWLESS INTERNALLY FLAWLESS | VERY VERY SLIGHTLY INCLUDED | VERY SLIGHTLY INCLUDED | SLIGHTLY INCLUDED | INCLUDED | |



LASERSCRIBESM

Sample Image Used

| | |
|-------------------------|-------------------------------------|
| February 24, 2022 | |
| IGI Report Number | LG516240867 |
| Description | LABORATORY GROWN DIAMOND |
| Shape and Cutting Style | SQUARE CUSHION BRILLIANT |
| Measurements | 7.41 X 7.32 X 4.93 MM |
| GRADING RESULTS | |
| Carat Weight | 2.02 CARATS |
| Color Grade | E |
| Clarity Grade | VS 1 |



| | |
|---------------------------------------|---------------------------------|
| ADDITIONAL GRADING INFORMATION | |
| Polish | EXCELLENT |
| Symmetry | EXCELLENT |
| Fluorescence | NONE |
| Inscription(s) | LABGROWN IGI LG516240867 |

Comments: As Grown - No indication of post-growth treatment.
This Laboratory Grown Diamond was created by High Pressure High Temperature (HPHT) growth process. Type II



| | |
|---------------------------------|----------------------------------------------------------------------------------------------------------------------------------------------------------------------|
| February 24, 2022 | |
| IGI Report No. LG516240867 | |
| SQUARE CUSHION BRILLIANT | |
| 7.41 X 7.32 X 4.93 MM | |
| Carat Weight | 2.02 CARATS |
| Color Grade | E |
| Clarity Grade | VS 1 |
| Depth | 67.3% |
| Table | 61% |
| Girdle | Medium To Slightly Thick (Faceted) |
| Culet | Pointed |
| Polish | EXCELLENT |
| Symmetry | EXCELLENT |
| Fluorescence | NONE |
| Inscription(s) | LABGROWN IGI LG516240867 |
| Comments: | As Grown - No indication of post-growth treatment. This Laboratory Grown Diamond was created by High Pressure High Temperature (HPHT) growth process. Type II |