



ELECTRONIC COPY

LABORATORY GROWN DIAMOND REPORT

July 28, 2022
IGI Report Number LG539227043
Description LABORATORY GROWN DIAMOND
Shape and Cutting Style ROUND BRILLIANT
Measurements 8.47 - 8.49 X 5.22 MM

GRADING RESULTS

Carat Weight 2.34 CARATS
Color Grade F
Clarity Grade VS 1
Cut Grade IDEAL

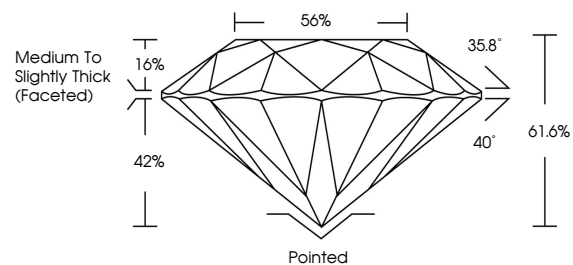
ADDITIONAL GRADING INFORMATION

Polish EXCELLENT
Symmetry EXCELLENT
Fluorescence NONE
Inscription(s) LABGROWN IGI LG539227043

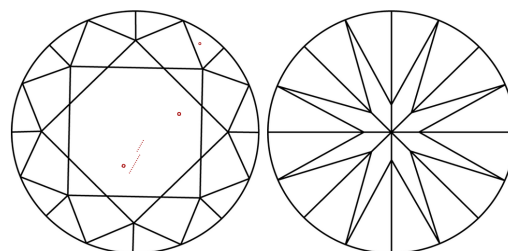
Comments: This Laboratory Grown Diamond was created by Chemical Vapor Deposition (CVD) growth process and may include post-growth treatment. Type IIa

LG539227043

PROPORTIONS



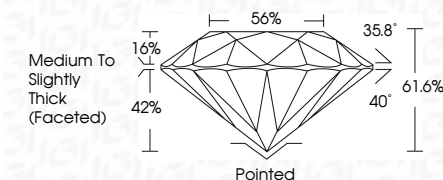
CLARITY CHARACTERISTICS



KEY TO SYMBOLS

Red symbols indicate internal characteristics.
Green symbols indicate external characteristics.

July 28, 2022
IGI Report Number LG539227043
Description LABORATORY GROWN DIAMOND
Shape and Cutting Style ROUND BRILLIANT
Measurements 8.47 - 8.49 X 5.22 MM
GRADING RESULTS
Carat Weight 2.34 CARATS
Color Grade F
Clarity Grade VS 1
Cut Grade IDEAL



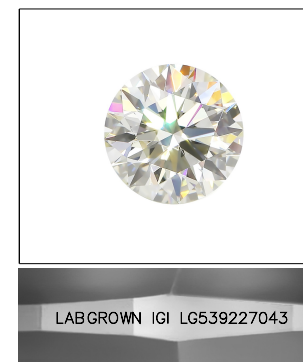
ADDITIONAL GRADING INFORMATION

Polish EXCELLENT
Symmetry EXCELLENT
Fluorescence NONE
Inscription(s) LABGROWN IGI LG539227043

Comments: This Laboratory Grown Diamond was created by Chemical Vapor Deposition (CVD) growth process and may include post-growth treatment. Type IIa

GRADING SCALES

Table with 5 columns for Color Grading Scale (CL, NC, FT, VLT, LT) and 5 columns for Clarity (10x) Grading Scale (FL, IF, VVS, VS, SI, I).



LABGROWN IGI LG539227043

LASERSCRIBE SM

Sample Image Used



Summary table of diamond details: July 28, 2022, IGI Report No. LG539227043, ROUND BRILLIANT, 8.47 - 8.49 X 5.22 MM, 2.34 CARATS, F, VS 1, IDEAL, 61.6%, 56%, Medium To Slightly Thick (Faceted), Pointed, EXCELLENT, EXCELLENT, NONE, LABGROWN IGI LG539227043.

Comments: This Laboratory Grown Diamond was created by Chemical Vapor Deposition (CVD) growth process and may include post-growth treatment. Type IIa