



ELECTRONIC COPY

LABORATORY GROWN DIAMOND REPORT

July 27, 2022
IGI Report Number LG539204368
Description LABORATORY GROWN DIAMOND
Shape and Cutting Style ROUND BRILLIANT
Measurements 8.51 - 8.57 X 5.11 MM

GRADING RESULTS

Carat Weight 2.30 CARATS
Color Grade G
Clarity Grade VVS 2
Cut Grade IDEAL

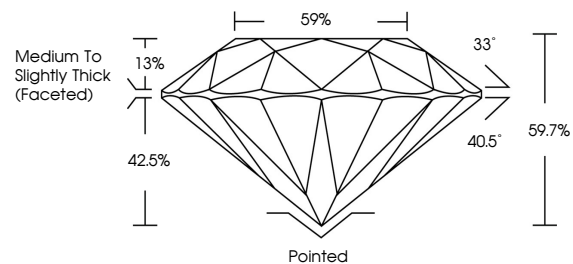
ADDITIONAL GRADING INFORMATION

Polish EXCELLENT
Symmetry EXCELLENT
Fluorescence NONE
Inscription(s) LABGROWN IGI LG539204368

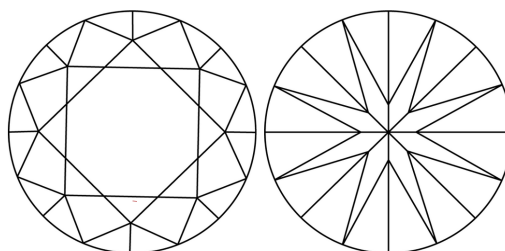
Comments: This Laboratory Grown Diamond was created by Chemical Vapor Deposition (CVD) growth process and may include post-growth treatment. Type IIa

LG539204368

PROPORTIONS



CLARITY CHARACTERISTICS



KEY TO SYMBOLS

Red symbols indicate internal characteristics.
Green symbols indicate external characteristics.

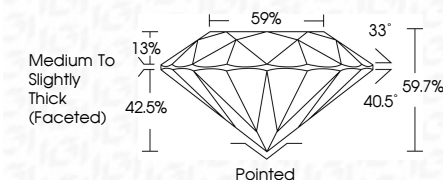
LABORATORY GROWN DIAMOND REPORT

LABORATORY GROWN DIAMOND REPORT

GRADING SCALES

Table showing color grading scales (CL, NC, FT, VLT, LT) and clarity (10x) grading scales (FL, IF, VVS, VS, SI, I) with their corresponding descriptions.

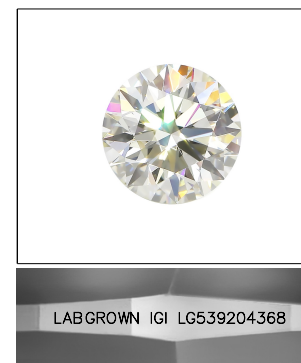
July 27, 2022
IGI Report Number LG539204368
Description LABORATORY GROWN DIAMOND
Shape and Cutting Style ROUND BRILLIANT
Measurements 8.51 - 8.57 X 5.11 MM
GRADING RESULTS
Carat Weight 2.30 CARATS
Color Grade G
Clarity Grade VVS 2
Cut Grade IDEAL



ADDITIONAL GRADING INFORMATION

Polish EXCELLENT
Symmetry EXCELLENT
Fluorescence NONE
Inscription(s) LABGROWN IGI LG539204368

Comments: This Laboratory Grown Diamond was created by Chemical Vapor Deposition (CVD) growth process and may include post-growth treatment. Type IIa



LASERSCRIBE SM
Sample Image Used



July 27, 2022
IGI Report No LG539204368
ROUND BRILLIANT
8.51 - 8.57 X 5.11 MM
Carat Weight 2.30 CARATS
Color Grade G
Clarity Grade VVS 2
Cut Grade IDEAL
Depth 59.7%
Table 59%
Girdle Medium To Slightly Thick (Faceted)
Culet Pointed
Polish EXCELLENT
Symmetry EXCELLENT
Fluorescence NONE
Inscription(s) LABGROWN IGI LG539204368
Comments: This Laboratory Grown Diamond was created by Chemical Vapor Deposition (CVD) growth process and may include post-growth treatment. Type IIa