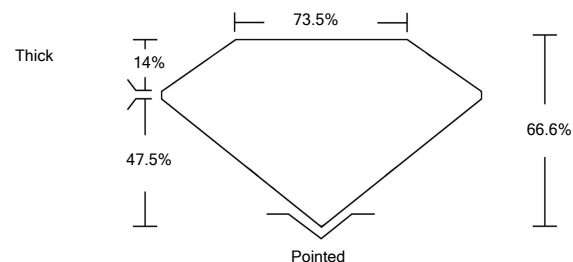




LG462133908

LABORATORY GROWN DIAMOND REPORT

PROPORTIONS



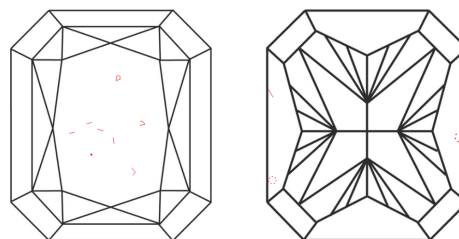
GRADING SCALES

Table with 5 columns for Color Grading Scale (CL, NC, FT, VLT, LT) and Clarity (10x) Grading Scale (FL, IF, VVS, VS, SI, I).

The laboratory grown diamond described in this Report (Report) has been graded, tested, analyzed, examined and/or inscribed by International Gemological Institute (IGI). A laboratory grown diamond is one that has essentially the same chemical, physical and optical properties as a mined diamond...

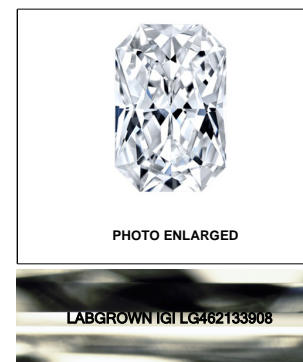
© INTERNATIONAL GEMOLOGICAL INSTITUTE, INC.

CLARITY CHARACTERISTICS



KEY TO SYMBOLS

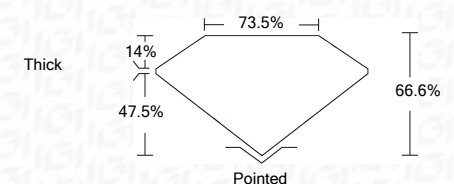
Red symbols indicate internal characteristics. Green symbols indicate external characteristics.



LASERSCRIBE<sup>SM</sup>



02/08/2021 IGI Report Number LG462133908 Shape and Cutting Style CUT CORNERED RECTANGULAR MODIFIED BRILLIANT Measurements 9.67 x 7.82 x 5.21 mm GRADING RESULTS Carat Weight 4.00 CARATS Color Grade F Clarity Grade VS 1



ADDITIONAL GRADING INFORMATION

Polish EXCELLENT Symmetry EXCELLENT Fluorescence NONE Inscription(s) LABGROWN IGI LG462133908

Comments: This Laboratory Grown Diamond was created by Chemical Vapor Deposition (CVD) growth process and may include post-growth treatment. Type IIa



IGI

02/08/2021 IGI Report No. LG462133908 CUT CORNERED RECT. MODIFIED BRILLIANT Measurements 9.67 x 7.82 x 5.21 mm Carat Weight 4.00 CARATS Color Grade F Clarity Grade VS 1 Depth 66.6% Table 73.5% Girdle Thick Pointed EXCELLENT EXCELLENT NONE LABGROWN IGI LG462133908

This Laboratory Grown Diamond was created by Chemical Vapor Deposition (CVD) growth process and may include post-growth treatment. Type IIa

