



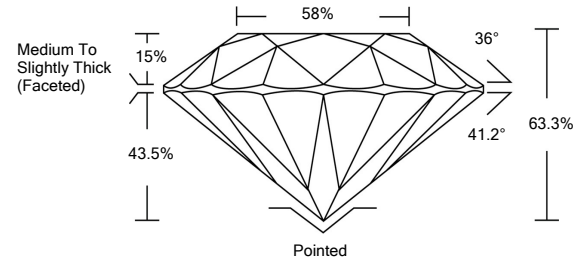
LABORATORY GROWN DIAMOND REPORT

LG480151736

GRADING SCALES

Table with 5 columns for Color Grading Scale (CL, NC, FT, VLT, LT) and Clarity (10x) Grading Scale (FL, IF, VVS, VS, SI, I).

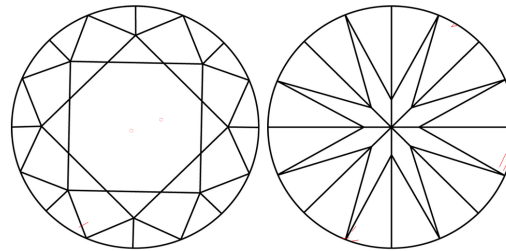
PROPORTIONS



The laboratory grown diamond described in this Report (Report) has been graded, tested, analyzed, examined and/or inscribed by International Gemological Institute (IGI). A laboratory grown diamond is one that has essentially the same chemical, physical and optical properties as a mined diamond...

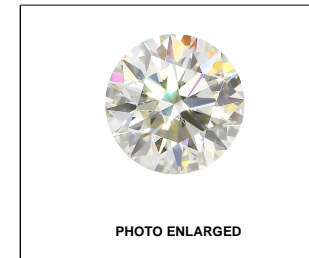
© INTERNATIONAL GEMOLOGICAL INSTITUTE, INC.

CLARITY CHARACTERISTICS



KEY TO SYMBOLS

Red symbols indicate internal characteristics. Green symbols indicate external characteristics.



LABGROWN IGI LG480151736

LASERSCRIBESM

06/11/2021

IGI Report Number LG480151736

Shape and Cutting Style ROUND BRILLIANT

Measurements 9.10 - 9.16 x 5.79 mm

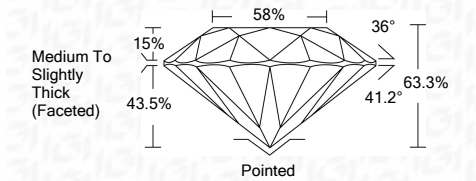
GRADING RESULTS

Carat Weight 3.02 CARATS

Color Grade G

Clarity Grade VS 1

Cut Grade EXCELLENT



ADDITIONAL GRADING INFORMATION

Polish VERY GOOD

Symmetry EXCELLENT

Fluorescence NONE

Inscription(s) LABGROWN IGI LG480151736

Comments: This Laboratory Grown Diamond was created by Chemical Vapor Deposition (CVD) growth process and may include post-growth treatment. Type IIa



IGI

06/11/2021 IGI Report No. LG480151736 ROUND BRILLIANT 9.10 - 9.16 x 5.79 mm 3.02 CARATS G VS 1 EXCELLENT 63.3% 58% Medium To Slightly Thick (Faceted) Pointed VERY GOOD EXCELLENT NONE LABGROWN IGI LG480151736

