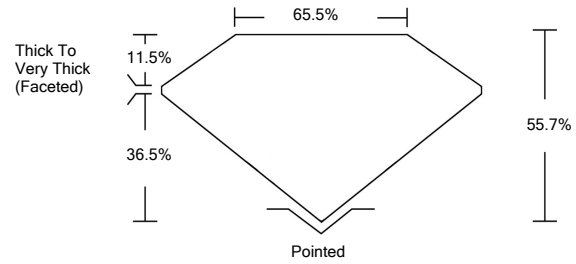




LG462133833

LABORATORY GROWN DIAMOND REPORT

PROPORTIONS

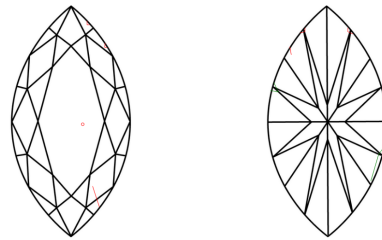


GRADING SCALES

Table with 5 columns for Color Grading Scale (CL, NC, FT, VLT, LT) and 5 columns for Clarity (10x) Grading Scale (FL, IF, VVS, VS, SI, I). Includes sub-labels like 'COLORLESS D-F', 'NEAR COLORLESS G-J', etc.

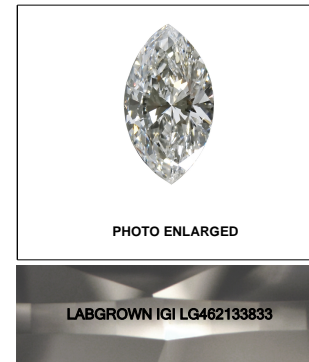
The laboratory grown diamond described in this Report (Report) has been graded, tested, analyzed, examined and/or inscribed by International Gemological Institute (IGI). A laboratory grown diamond is one that has essentially the same chemical, physical and optical properties as a mined diamond...

CLARITY CHARACTERISTICS



KEY TO SYMBOLS

Red symbols indicate internal characteristics. Green symbols indicate external characteristics.



02/02/2021 IGI Report Number LG462133833 Shape and Cutting Style MARQUISE BRILLIANT Measurements 11.88 x 7.00 x 3.90 mm

GRADING RESULTS Carat Weight 2.01 CARATS Color Grade H Clarity Grade SI 1

ADDITIONAL GRADING INFORMATION Polish EXCELLENT Symmetry VERY GOOD Fluorescence NONE Inscription(s) LABGROWN IGI LG462133833

Comments: This Laboratory Grown Diamond was created by Chemical Vapor Deposition (CVD) growth process and may include post-growth treatment. Type IIa

02/02/2021 IGI Report Number LG462133833 Shape and Cutting Style MARQUISE BRILLIANT Measurements 11.88 x 7.00 x 3.90 mm

GRADING RESULTS Carat Weight 2.01 CARATS Color Grade H Clarity Grade SI 1

ADDITIONAL GRADING INFORMATION Polish EXCELLENT Symmetry VERY GOOD Fluorescence NONE Inscription(s) LABGROWN IGI LG462133833

Comments: This Laboratory Grown Diamond was created by Chemical Vapor Deposition (CVD) growth process and may include post-growth treatment. Type IIa



IGI

02/02/2021 IGI Report No. LG462133833 MARQUISE BRILLIANT 11.88 x 7.00 x 3.90 mm 2.01 CARATS H SI 1 65.7% 65.5% Thick To Very Thick (Faceted) Pointed EXCELLENT VERY GOOD NONE LABGROWN IGI LG462133833

This Laboratory Grown Diamond was created by Chemical Vapor Deposition (CVD) growth process and may include post-growth treatment. Type IIa