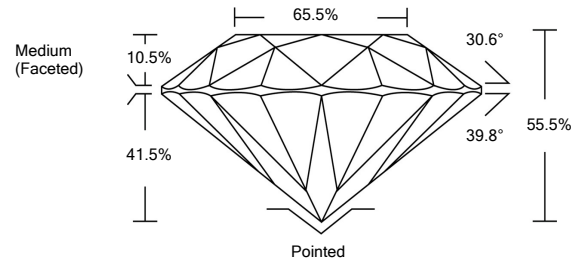




LG459107221

LABORATORY GROWN DIAMOND REPORT

PROPORTIONS



GRADING SCALES

COLOR GRADING SCALE	CL	NC	FT	VL	LT
	COLORLESS D-F	NEAR COLORLESS G-J	FAINT K-M	VERY LIGHT N-R	LIGHT S-Z
CLARITY (10x) GRADING SCALE	FL	VVS	VS	SI	I
	FLAWLESS INTERNALLY FLAWLESS	VERY VERY SLIGHTLY INCLUDED	VERY SLIGHTLY INCLUDED	SLIGHTLY INCLUDED	INCLUDED

The laboratory grown diamond described in this Report (Report) has been graded, tested, analyzed, examined and/or inscribed by International Gemological Institute (IGI). A laboratory grown diamond is one that has essentially the same chemical, physical and optical properties as a mined diamond, with the exception of being grown by man (a manufactured product). IGI employs and utilizes those techniques and equipment currently available to IGI, including, without limitation, 10X magnification, corrected triplet loupe, binocular microscope, master color comparison stones, non-contact-optical measuring device, Diamond Sure™, Diamond View™, Spectrophotometer and such other instruments and/or processes as deemed appropriate by IGI. This Report includes advanced security features. A duly accredited gemologist or jeweler can advise you with respect to the importance of and interrelationship between cut, color, clarity and carat weight.

THIS REPORT IS NEITHER A GUARANTEE, VALUATION, NOR APPRAISAL OF THE GEMSTONE DESCRIBED HEREIN. PLEASE REVIEW THE LIMITATIONS AND RESTRICTIONS SET FORTH ONLINE. FOR ADDITIONAL INFORMATION, IMPORTANT LIMITATIONS AND DISCLAIMERS, PLEASE GO TO WWW.IGI.ORG OR CALL 1-888-BUY-IGIS.

© INTERNATIONAL GEMOLOGICAL INSTITUTE, INC.

01/29/2021

IGI Report Number **LG459107221**

Shape and Cutting Style **ROUND BRILLIANT**

Measurements **8.43 - 8.47 x 4.69 mm**

GRADING RESULTS

Carat Weight **2.05 CARATS**

Color Grade **F**

Clarity Grade **SI 1**

Cut Grade **VERY GOOD**

01/29/2021

IGI Report Number **LG459107221**

Shape and Cutting Style **ROUND BRILLIANT**

Measurements **8.43 - 8.47 x 4.69 mm**

GRADING RESULTS

Carat Weight **2.05 CARATS**

Color Grade **F**

Clarity Grade **SI 1**

Cut Grade **VERY GOOD**

ADDITIONAL GRADING INFORMATION

Polish **EXCELLENT**

Symmetry **EXCELLENT**

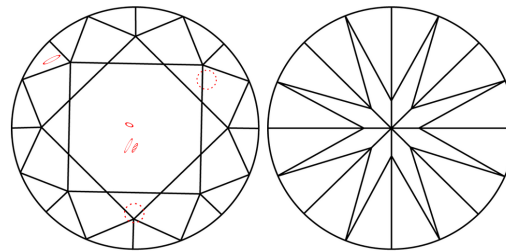
Fluorescence **NONE**

Inscription(s) **LABGROWN IGI LG459107221**

Comments: As Grown - No indication of post-growth treatment.

This Laboratory Grown Diamond was created by High Pressure High Temperature (HPHT) growth process. Type II

CLARITY CHARACTERISTICS



KEY TO SYMBOLS

Red symbols indicate internal characteristics. Green symbols indicate external characteristics.

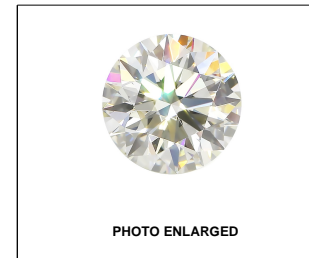
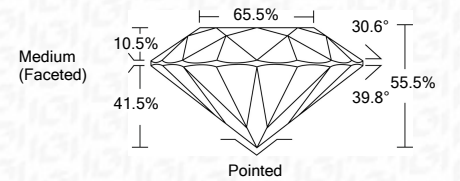


PHOTO ENLARGED

LABGROWN IGI LG459107221

LASERSCRIBESM



ADDITIONAL GRADING INFORMATION

Polish **EXCELLENT**

Symmetry **EXCELLENT**

Fluorescence **NONE**

Inscription(s) **LABGROWN IGI LG459107221**

Comments: As Grown - No indication of post-growth treatment. This Laboratory Grown Diamond was created by High Pressure High Temperature (HPHT) growth process. Type II



IGI

01/29/2021 IGI Report No. LG459107221

ROUND BRILLIANT

8.43 - 8.47 x 4.69 mm

Carat Weight 2.05 CARATS

F

SI 1

Color Grade VERY GOOD

Depth 65.5%

Cut Grade 65.5%

Medium (Faceted)

Polished

EXCELLENT

EXCELLENT

FLUORESCENCE

NONE

INSCRIPTION(S)

LABGROWN IGI

LG459107221

Comments: No indication of post-growth treatment.

This Laboratory Grown Diamond was created by High Pressure High Temperature (HPHT) growth process.

Type II