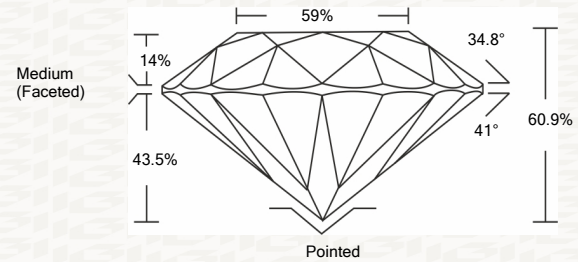




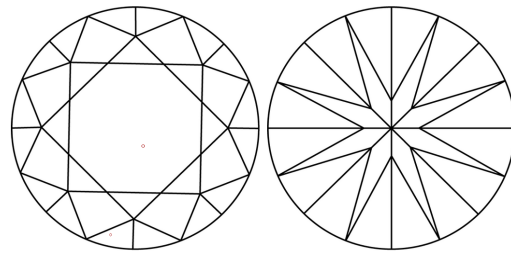
IGI GEMOLOGICAL REPORT

ADDITIONAL INFORMATION

PROPORTIONS



CLARITY CHARACTERISTICS



KEY TO SYMBOLS

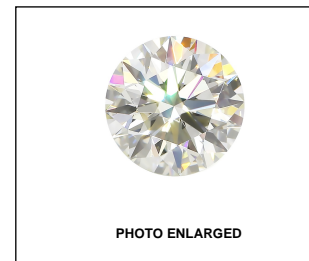
Red symbols indicate internal characteristics. Green symbols indicate external characteristics.

This Report is subject to the terms and conditions © IGI 2000, edition 2019 all rights reserved.

GRADING SCALES

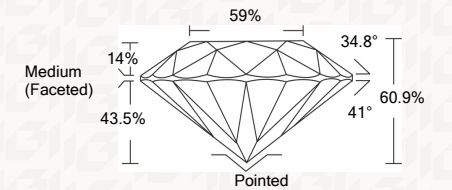
Table with 2 rows and 5 columns showing grading scales for Color (CL), Near Colorless (NC), Faint (FT), Very Light (VLT), and Light (LT) for both Color and Clarity.

The laboratory grown diamond described in this Report (Report) has been graded, tested, analyzed, examined and/or inscribed by International Gemological Institute (IGI). A laboratory grown diamond is one that has essentially the same chemical, physical and optical properties as a mined diamond...



IGI LABORATORY GROWN DIAMOND GRADING REPORT

11/03/2020 IGI Report Number LG447091293 Shape and Cutting Style ROUND BRILLIANT Measurements 6.81 - 6.87 X 4.17 MM GRADING RESULTS Carat Weight 1.19 CARAT Color Grade G Clarity Grade VS 1 Cut Grade IDEAL



ADDITIONAL GRADING INFORMATION

Polish EXCELLENT Symmetry EXCELLENT Fluorescence NONE Inscription(s) LABGROWN IGI LG447091293

Comments: This Laboratory grown diamond was created by chemical vapor deposition process (CVD). Type IIa



IGI

11/03/2020 IGI Report No. LG447091293 ROUND BRILLIANT 6.81 - 6.87 X 4.17 MM 1.19 CARAT G VS 1 IDEAL 60.9% 59% Medium (Faceted) EXCELLENT EXCELLENT NONE LABGROWN IGI LG447091293 Comments: This Laboratory grown diamond was created by chemical vapor deposition process (CVD). Type IIa

