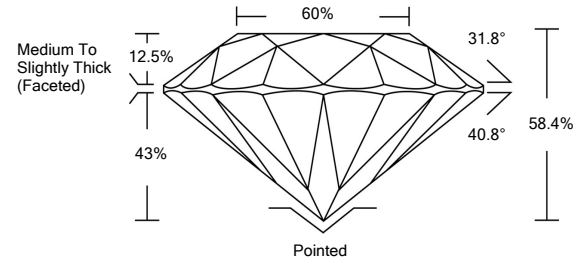




LG474108043

LABORATORY GROWN DIAMOND REPORT

PROPORTIONS



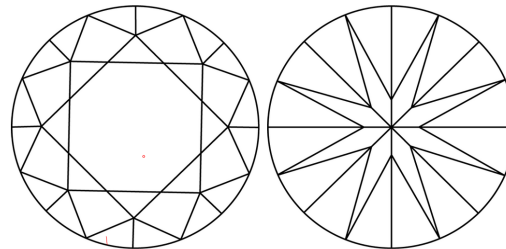
GRADING SCALES

Table with 5 columns for Color Grading Scale (CL to LT) and Clarity (10x) Grading Scale (FL to I).

The laboratory grown diamond described in this Report (Report) has been graded, tested, analyzed, examined and/or inscribed by International Gemological Institute (IGI). A laboratory grown diamond is one that has essentially the same chemical, physical and optical properties as a mined diamond...

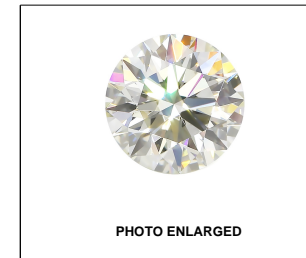
© INTERNATIONAL GEMOLOGICAL INSTITUTE, INC.

CLARITY CHARACTERISTICS



KEY TO SYMBOLS

Red symbols indicate internal characteristics. Green symbols indicate external characteristics.



LABGROWN IGI LG474108043

LASERSCRIBESM

04/29/2021

IGI Report Number LG474108043

Shape and Cutting Style ROUND BRILLIANT

Measurements 9.07 - 9.11 x 5.30 mm

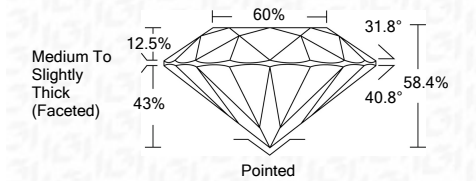
GRADING RESULTS

Carat Weight 2.63 CARATS

Color Grade G

Clarity Grade VS 2

Cut Grade EXCELLENT



ADDITIONAL GRADING INFORMATION

Polish EXCELLENT

Symmetry EXCELLENT

Fluorescence NONE

Inscription(s) LABGROWN IGI LG474108043

Comments: This Laboratory Grown Diamond was created by Chemical Vapor Deposition (CVD) growth process and may include post-growth treatment. Type IIa



IGI

Summary table of report details: 04/29/2021, IGI Report No. LG474108043, ROUND BRILLIANT, 9.07 - 9.11 x 5.30 mm, 2.63 CARATS, G, VS 2, EXCELLENT, 58.4%, 60%, Medium To Slightly Thick (Faceted), Pointed, EXCELLENT, EXCELLENT, NONE, LABGROWN IGI LG474108043.

