



IGI GEMOLOGICAL REPORT

IGI LABORATORY GROWN DIAMOND GRADING REPORT

11/04/2020 IGI Report Number LG447091300

Shape and Cutting Style ROUND BRILLIANT

Measurements 8.22 - 8.30 X 4.87 MM

GRADING RESULTS

Carat Weight 2.02 CARATS

Color Grade I

Clarity Grade VS 2

Cut Grade EXCELLENT

ADDITIONAL GRADING INFORMATION

Polish EXCELLENT

Symmetry EXCELLENT

Fluorescence NONE

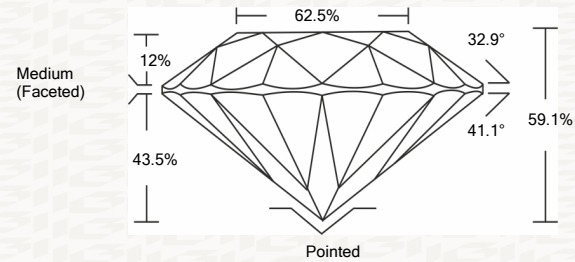
Inscription(s) LABGROWN IGI LG447091300

Comments: This Laboratory grown diamond was created by chemical vapor deposition process (CVD). Type IIa

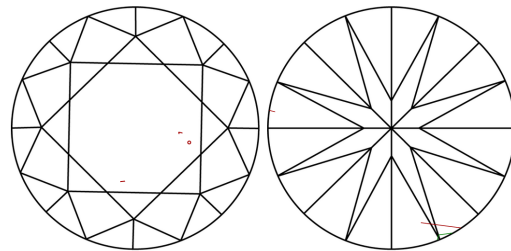


ADDITIONAL INFORMATION

PROPORTIONS



CLARITY CHARACTERISTICS



KEY TO SYMBOLS

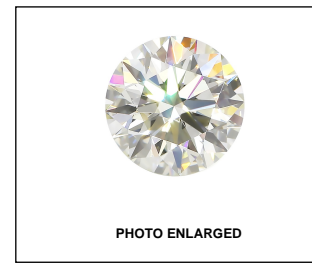
Red symbols indicate internal characteristics. Green symbols indicate external characteristics.

This Report is subject to the terms and conditions © IGI 2000, edition 2019 all rights reserved.

GRADING SCALES

Table with 2 rows and 5 columns showing grading scales for Color (CL) and Clarity (10x) with corresponding descriptions like 'COLORLESS D-F', 'FLAWLESS INTERNALLY FLAWLESS', etc.

The laboratory grown diamond described in this Report (Report) has been graded, tested, analyzed, examined and/or inscribed by International Gemological Institute (IGI). A laboratory grown diamond is one that has essentially the same chemical, physical and optical properties as a mined diamond...



LASERSCRIBE SM



THE DOCUMENT WAS PRODUCED WITH THE FOLLOWING SECURITY MEASURES: SPECIAL DOCUMENT PAPER, INK SCREENS, WATERMARK BACKGROUND DESIGNS HOLOGRAM AND OTHER SECURITY FEATURES NOT LISTED AND DO EXCEED DOCUMENT SECURITY INDUSTRY GUIDELINES

IGI LABORATORY GROWN DIAMOND GRADING REPORT

11/04/2020 IGI Report Number LG447091300

Shape and Cutting Style ROUND BRILLIANT

Measurements 8.22 - 8.30 X 4.87 MM

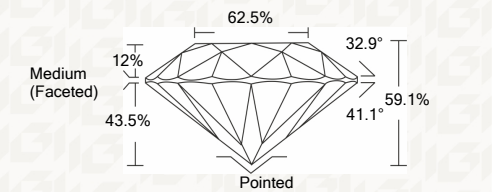
GRADING RESULTS

Carat Weight 2.02 CARATS

Color Grade I

Clarity Grade VS 2

Cut Grade EXCELLENT



ADDITIONAL GRADING INFORMATION

Polish EXCELLENT

Symmetry EXCELLENT

Fluorescence NONE

Inscription(s) LABGROWN IGI LG447091300

Comments: This Laboratory grown diamond was created by chemical vapor deposition process (CVD). Type IIa



IGI

11/04/2020 IGI Report No. LG447091300 ROUND BRILLIANT 8.22 - 8.30 X 4.87 MM Carat Weight 2.02 CARATS Color Grade I Clarity Grade VS 2 Cut Grade EXCELLENT Depth 59.1% Table 62.5% Girdle Medium (Faceted) Polish Pointed EXCELLENT Symmetry EXCELLENT Fluorescence NONE Inscription(s) LABGROWN IGI LG447091300 Comments: This Laboratory grown diamond was created by chemical vapor deposition process (CVD). Type IIa