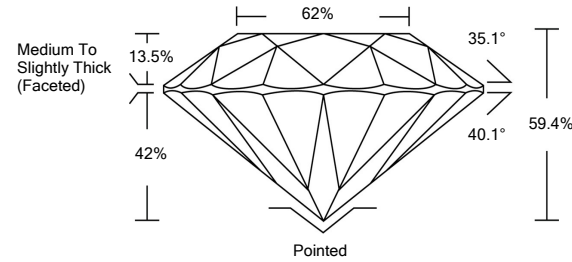




LG468169548

LABORATORY GROWN DIAMOND REPORT

PROPORTIONS



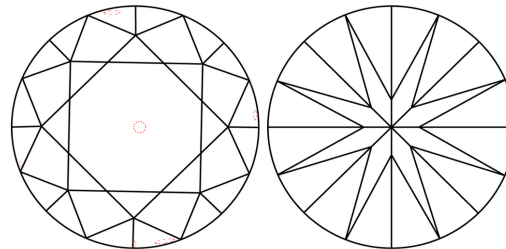
GRADING SCALES

Table with 5 columns for Color (CL, NC, FT, VLT, LT) and Clarity (FL, IF, VVS, VS, SI, I) grading scales.

The laboratory grown diamond described in this Report (Report) has been graded, tested, analyzed, examined and/or inscribed by International Gemological Institute (IGI). A laboratory grown diamond is one that has essentially the same chemical, physical and optical properties as a mined diamond...

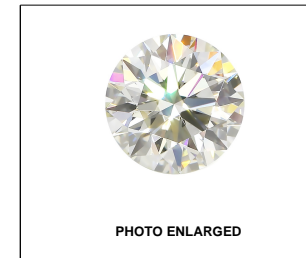
© INTERNATIONAL GEMOLOGICAL INSTITUTE, INC.

CLARITY CHARACTERISTICS



KEY TO SYMBOLS

Red symbols indicate internal characteristics. Green symbols indicate external characteristics.



LABGROWN IGI LG468169548

LASERSCRIBE<sup>SM</sup>

03/15/2021

IGI Report Number LG468169548

Shape and Cutting Style ROUND BRILLIANT

Measurements 8.56 - 8.63 x 5.12 mm

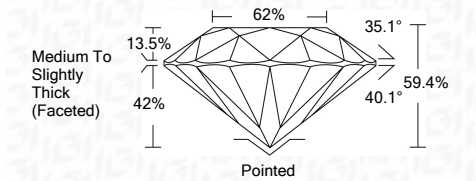
GRADING RESULTS

Carat Weight 2.37 CARATS

Color Grade F

Clarity Grade VS 2

Cut Grade EXCELLENT



ADDITIONAL GRADING INFORMATION

Polish EXCELLENT

Symmetry EXCELLENT

Fluorescence NONE

Inscription(s) LABGROWN IGI LG468169548

Comments: This Laboratory Grown Diamond was created by Chemical Vapor Deposition (CVD) growth process and may include post-growth treatment. Type IIa



IGI

Summary table of report details: IGI Report No. LG468169548, ROUND BRILLIANT, 8.56 - 8.63 x 5.12 mm, 2.37 CARATS, Color Grade F, Clarity Grade VS 2, Cut Grade EXCELLENT, Depth 59.4%, Table 62%, Girdle Medium To Slightly Thick (Faceted), Culet Pointed, Polish EXCELLENT, Symmetry EXCELLENT, Fluorescence NONE, Inscription(s) LABGROWN IGI LG468169548.

03/15/2021

IGI Report No. LG468169548

ROUND BRILLIANT

8.56 - 8.63 x 5.12 mm

2.37 CARATS

F

VS 2

EXCELLENT

59.4%

62%

Medium To Slightly Thick (Faceted)

Pointed

EXCELLENT

EXCELLENT

NONE

LABGROWN IGI LG468169548

Comments: This Laboratory Grown Diamond was created by Chemical Vapor Deposition (CVD) growth process and may include post-growth treatment. Type IIa

