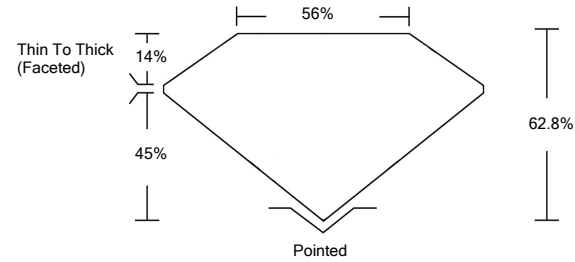




LG478112237

LABORATORY GROWN DIAMOND REPORT

PROPORTIONS

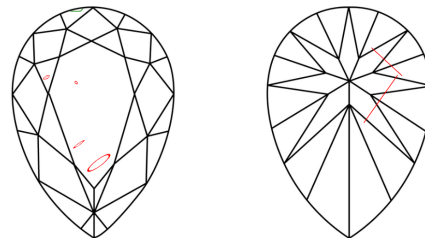


GRADING SCALES

Table with 5 columns for Color Grading Scale (CL, NC, FT, VLT, LT) and Clarity (10x) Grading Scale (FL, IF, VVS, VS, SI, I).

The laboratory grown diamond described in this Report (Report) has been graded, tested, analyzed, examined and/or inscribed by International Gemological Institute (IGI). A laboratory grown diamond is one that has essentially the same chemical, physical and optical properties as a mined diamond...

CLARITY CHARACTERISTICS



KEY TO SYMBOLS

Red symbols indicate internal characteristics. Green symbols indicate external characteristics.

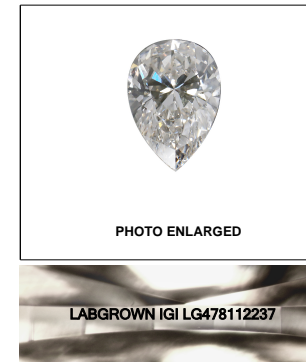


PHOTO ENLARGED

LASERSCRIBE SM

06/03/2021

IGI Report Number LG478112237

Shape and Cutting Style PEAR BRILLIANT

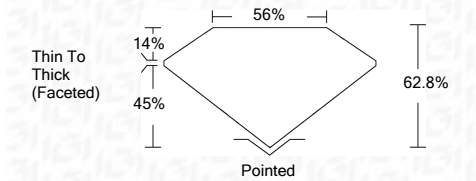
Measurements 9.64 x 6.42 x 4.03 mm

GRADING RESULTS

Carat Weight 1.51 CARAT

Color Grade F

Clarity Grade SI 2



ADDITIONAL GRADING INFORMATION

Polish EXCELLENT

Symmetry VERY GOOD

Fluorescence NONE

Inscription(s) LABGROWN IGI LG478112237

Comments: As Grown - No indication of post-growth treatment. This Laboratory Grown Diamond was created by High Pressure High Temperature (HPHT) growth process. Type II



Summary table of report details: IGI Report No. LG478112237, PEAR BRILLIANT, 9.64 x 6.42 x 4.03 mm, 1.51 CARAT, SI 2, 62.8% Depth, 56% Table, EXCELLENT Polish, VERY GOOD Symmetry, NONE Fluorescence, LABGROWN IGI LG478112237 Inscription(s).

